

PICTURES AND MAPS



Fig. 4: Dzivin-Habovichy, June 2009. (Photo: Volker Blueml)



Fig. 5: Dzivin-Luban, December 2008. (Photo: Uladzimir Malashevich)



Fig. 6: Dzivin-Rudzets, December 2008. (Photo: *Uladzimir Malashevich*)



Fig. 7: Zvanets mire, June 2009. (Photo: *Oleg Kalchenko*)





Fig. 8: Gayna mouth, April 2009. (Photo: *Uladzimir Malashevich*)



Fig. 9: Lelchytsy, May 2005. (Photo: *Pavel Pinchuk*)





Fig. 10: Servach, June 2009. (Photo: Oleg Pareyko)



Fig. 11: Shchara-Dabramysl, July 2009. (Photo: Annett Thiele)





Fig. 12: Styr mouth, June 2007. (Photo: Marina Dmitrenok)



Fig. 13: Svislach, September 2008. (Photo: Dmitry Vincheusky)



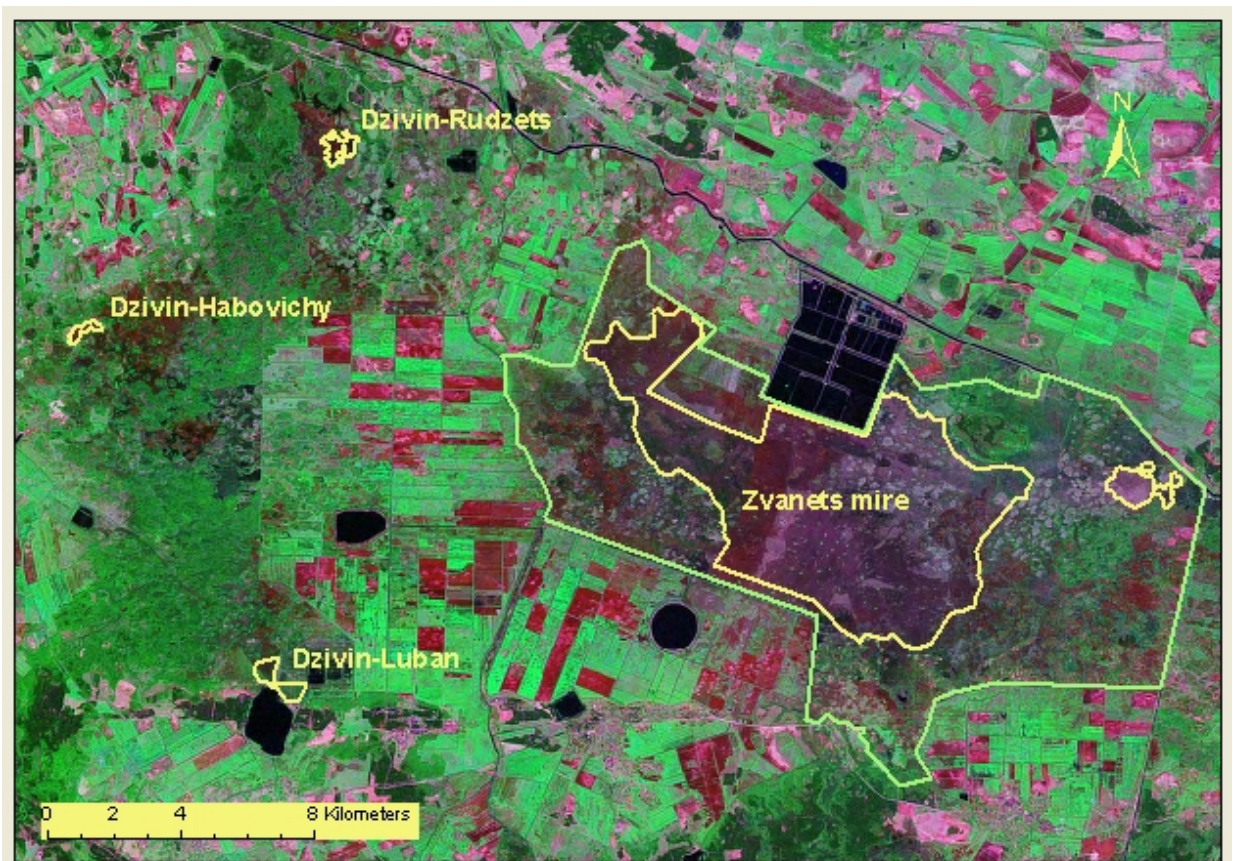


Fig. 14: Zvanets and vicinities. (AW habitats – yellow, IBA – green)



Fig. 15: Gayna mouth. (AW habitat – yellow, IBA – green)



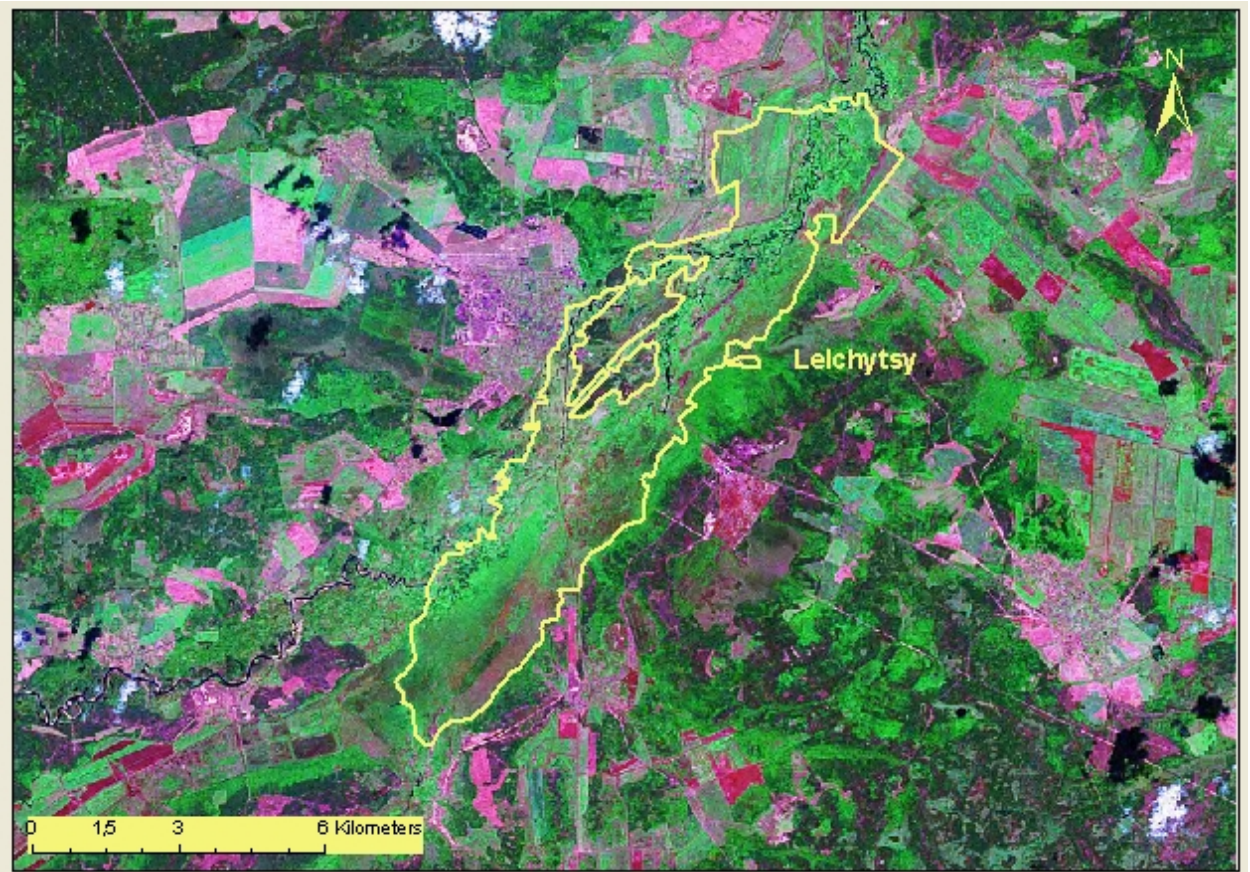


Fig. 16: Lelchytsy. (AW habitat – yellow)



Fig. 17: Servach. (AW habitat – yellow, IBA – green)





Fig. 18: Shchara floodplain. (AW habitats – yellow, IBA – green, potential AW habitats are marked with dashed line)

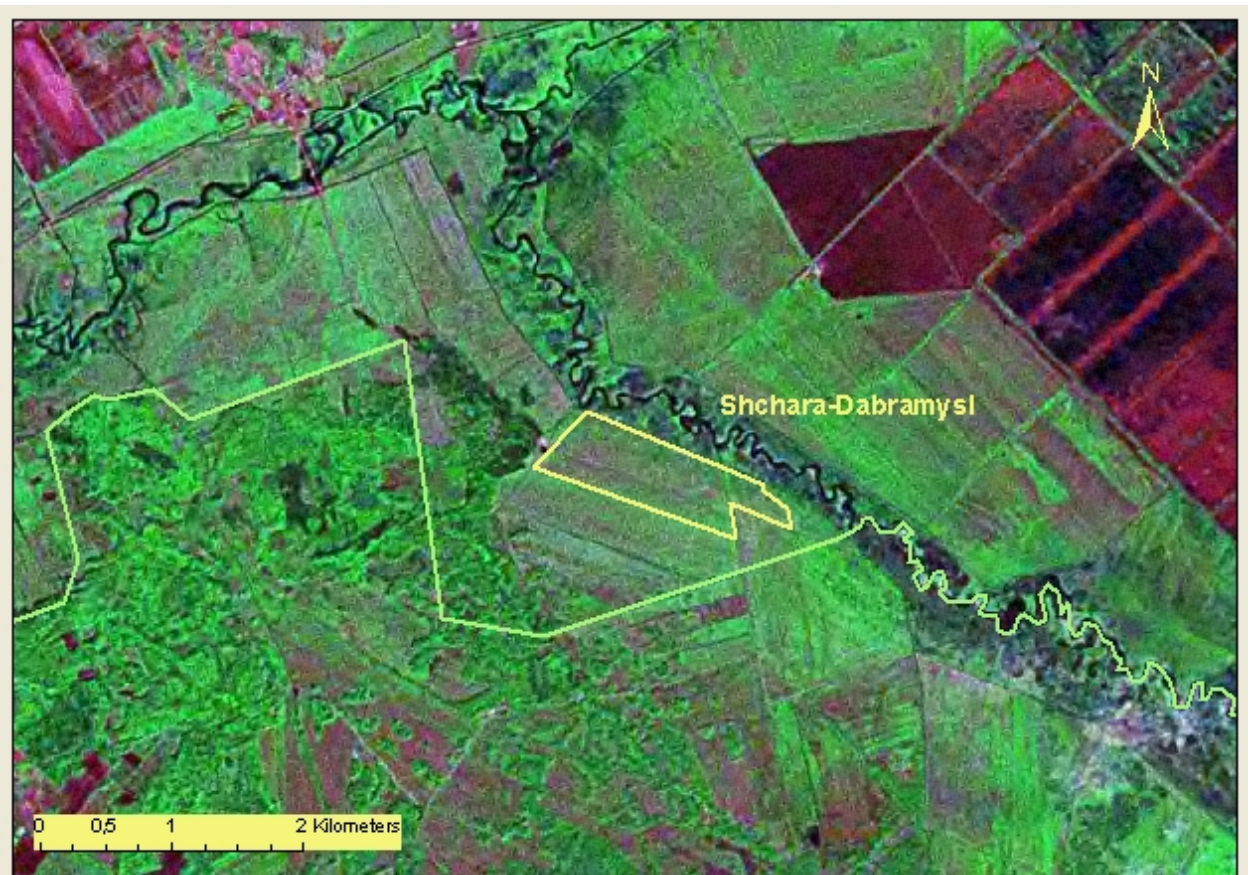


Fig. 19: Shchara-Dabramysl. (AW habitat – yellow, IBA – green)



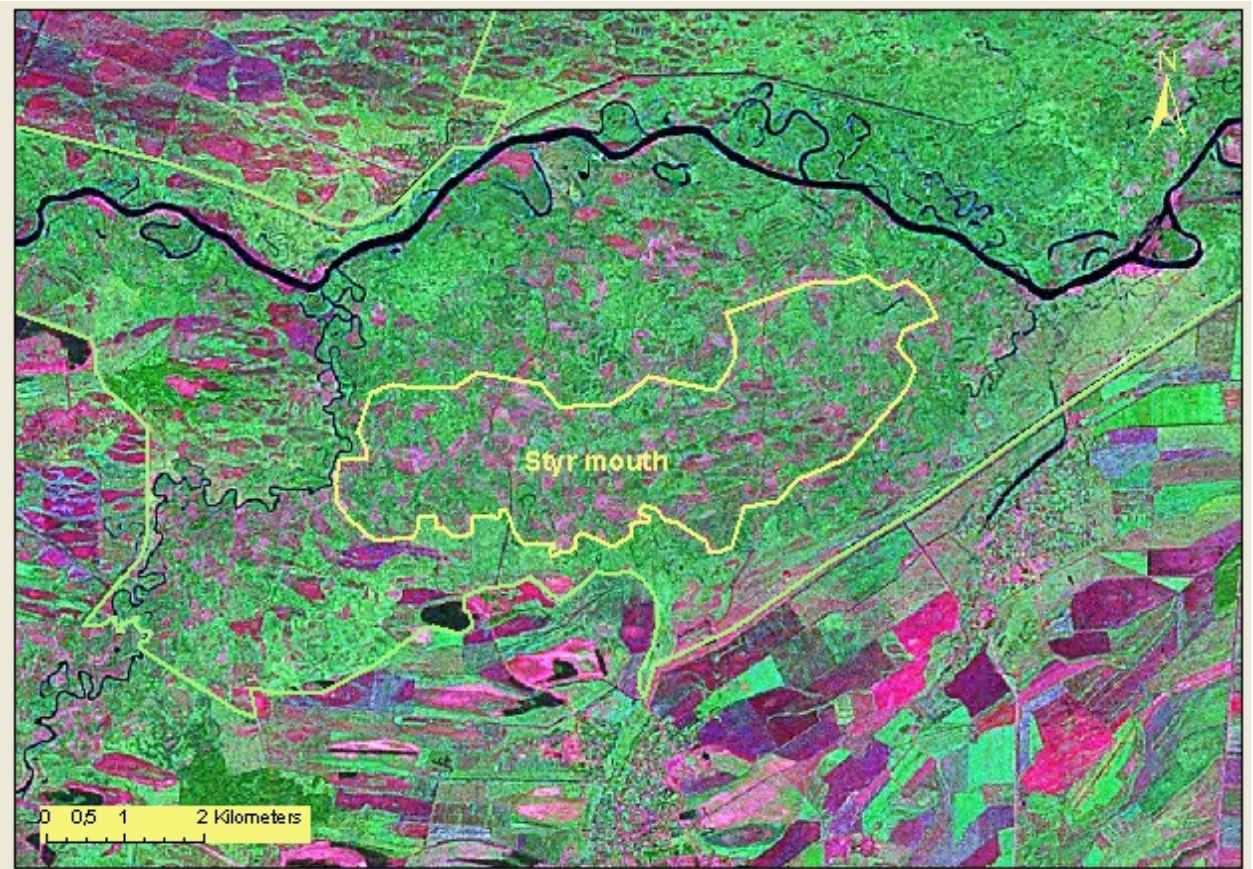


Fig. 20: Styr mouth. (AW habitat – yellow, IBA – green)

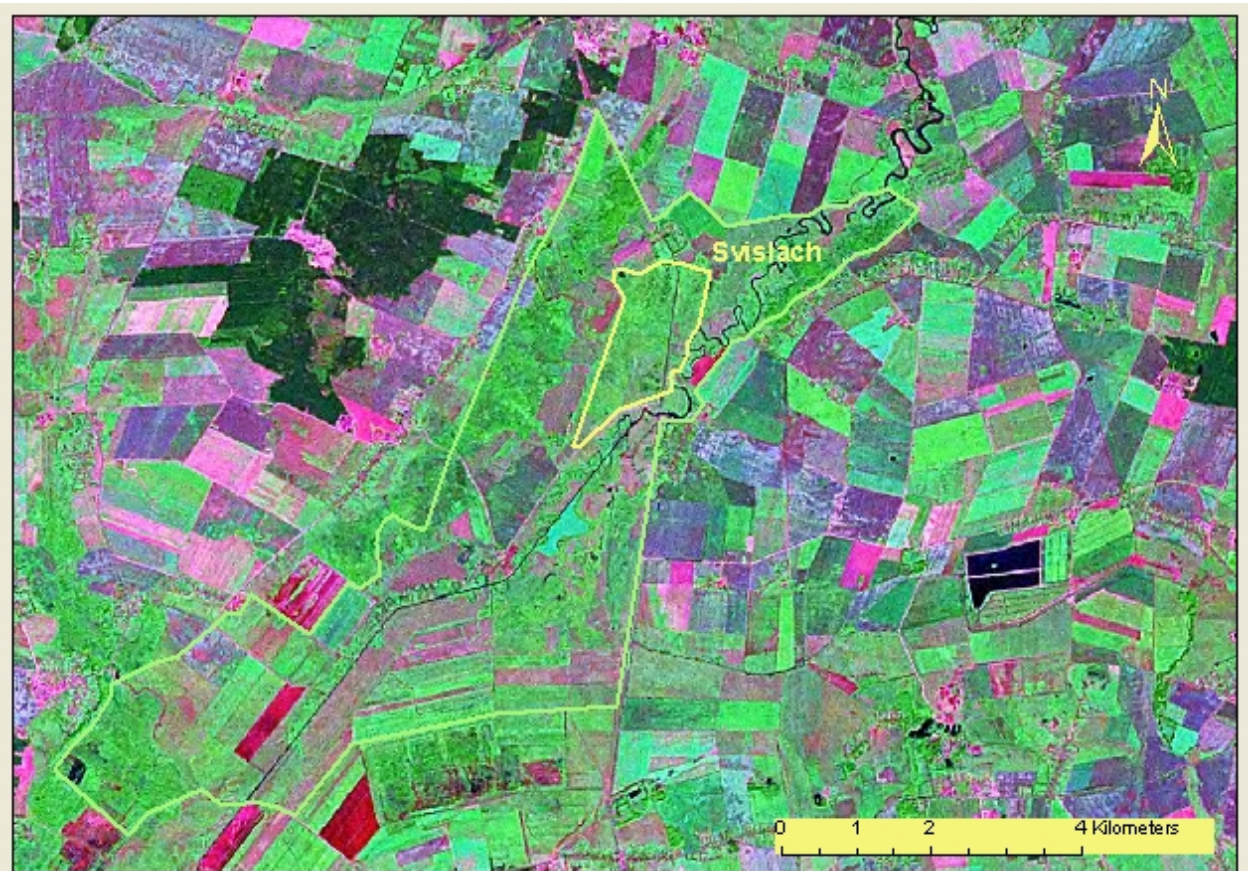


Fig. 21: Svislach. (AW habitat – yellow, IBA – green)