

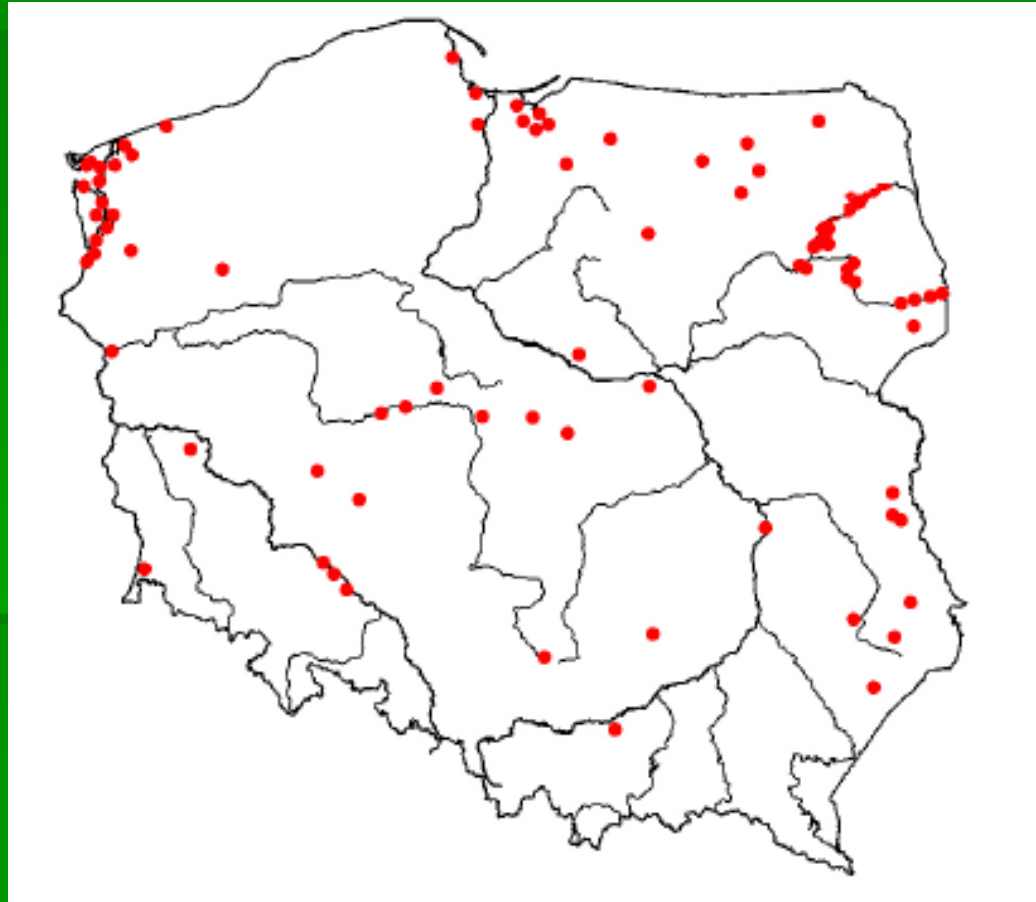
Aquatic warbler (*Acrocephalus paludicola*) conservation status in Poland



Jarosław Krogulec

Department of Nature Conservation
Institute of Biology
University of Maria Curie-Skłodowska
Lublin, POLAND

Historical data 1800-1997 (Tomiałojć 1990)

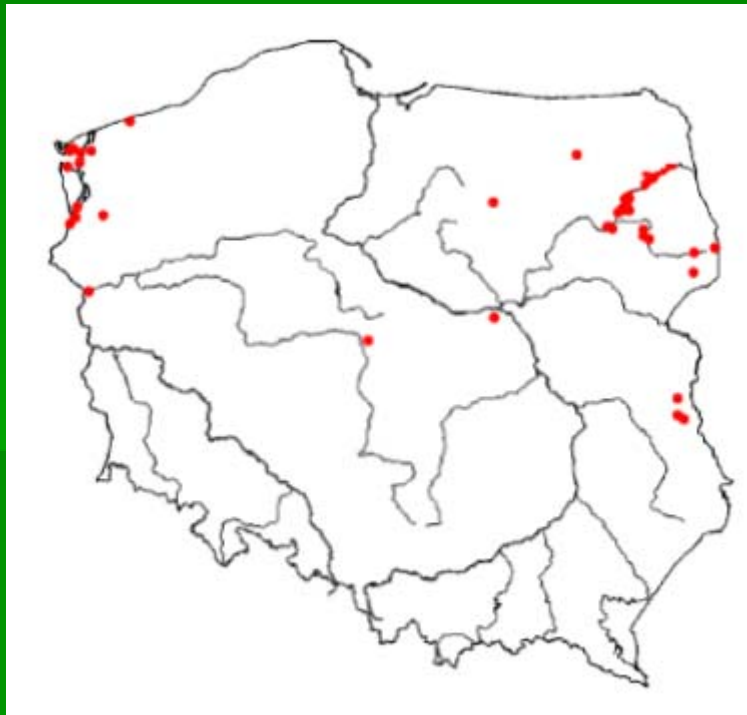


OTOP nationwide census

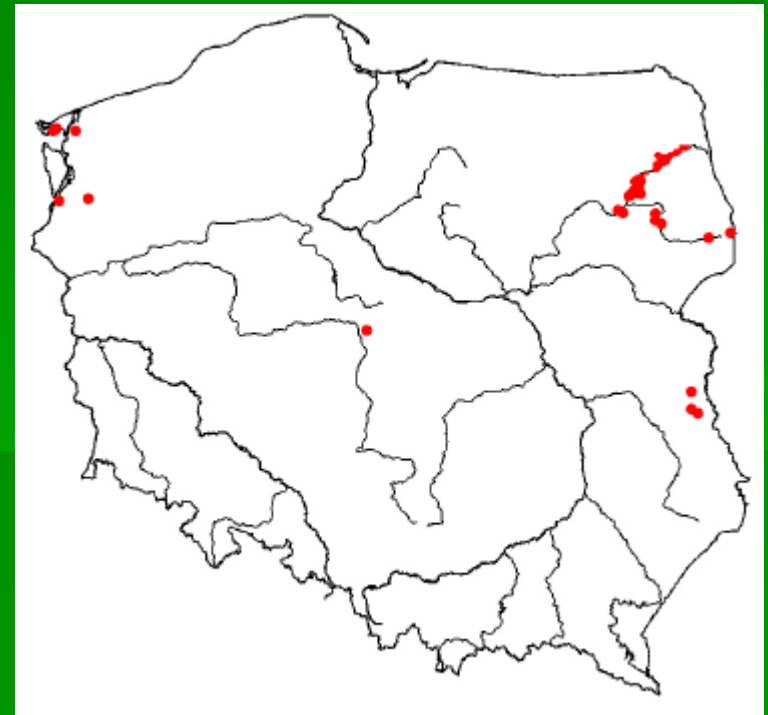


OTOP nationwide census

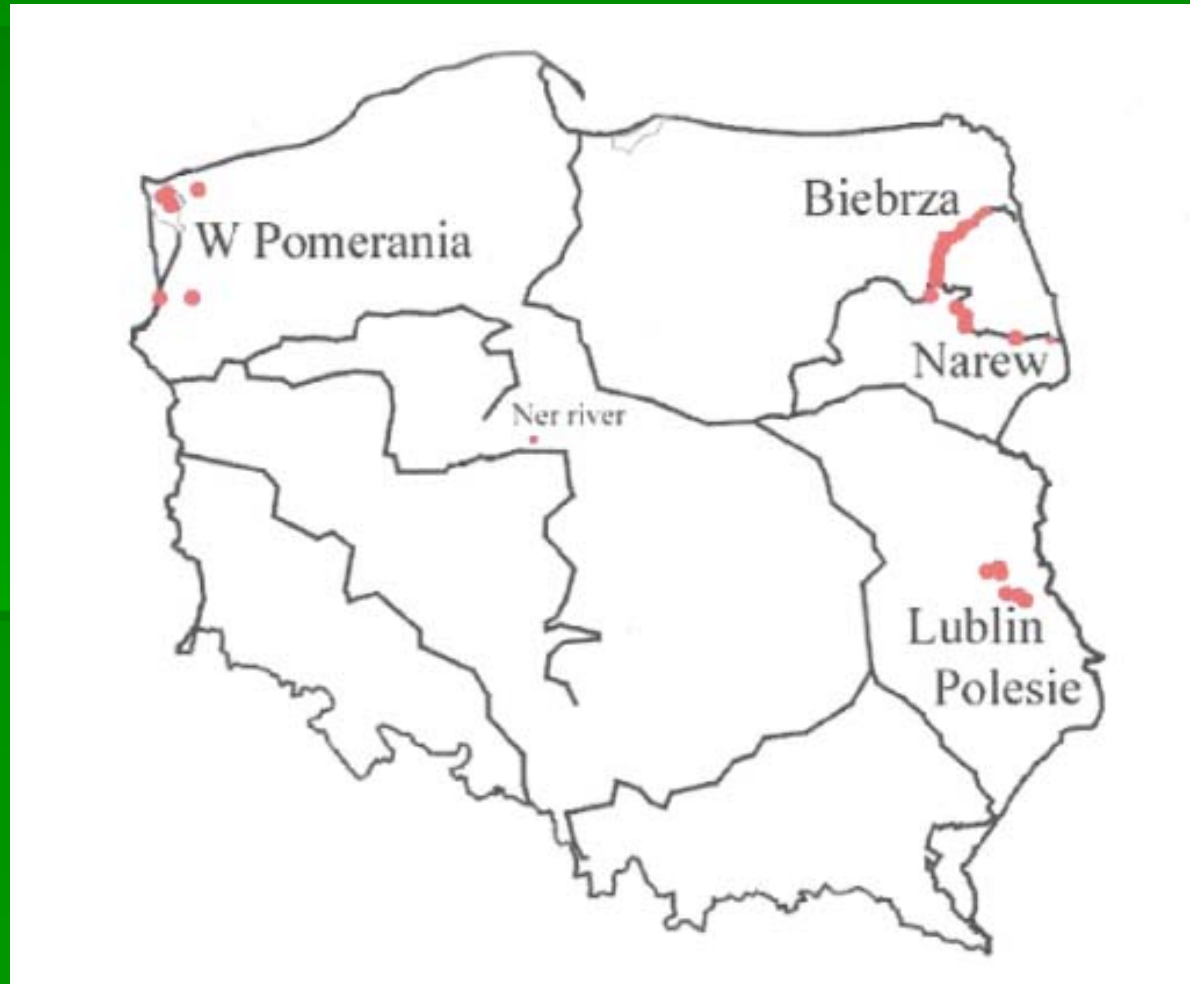
1997 (2900 s.m.)



2003 (3470 s.m.)



Current distribution (2003)



Major habitat types - Biebrza

Rich floodplain marshes in river valleys :

- open sedge fen mires, and
- wet marshy grasslands covered by high grass and clumps of sedges

Population – 2693 – 2726 s.m.

Major habitat types – Lublin Polesie :

-calcareous marshes with *Cladium mariscus*, and

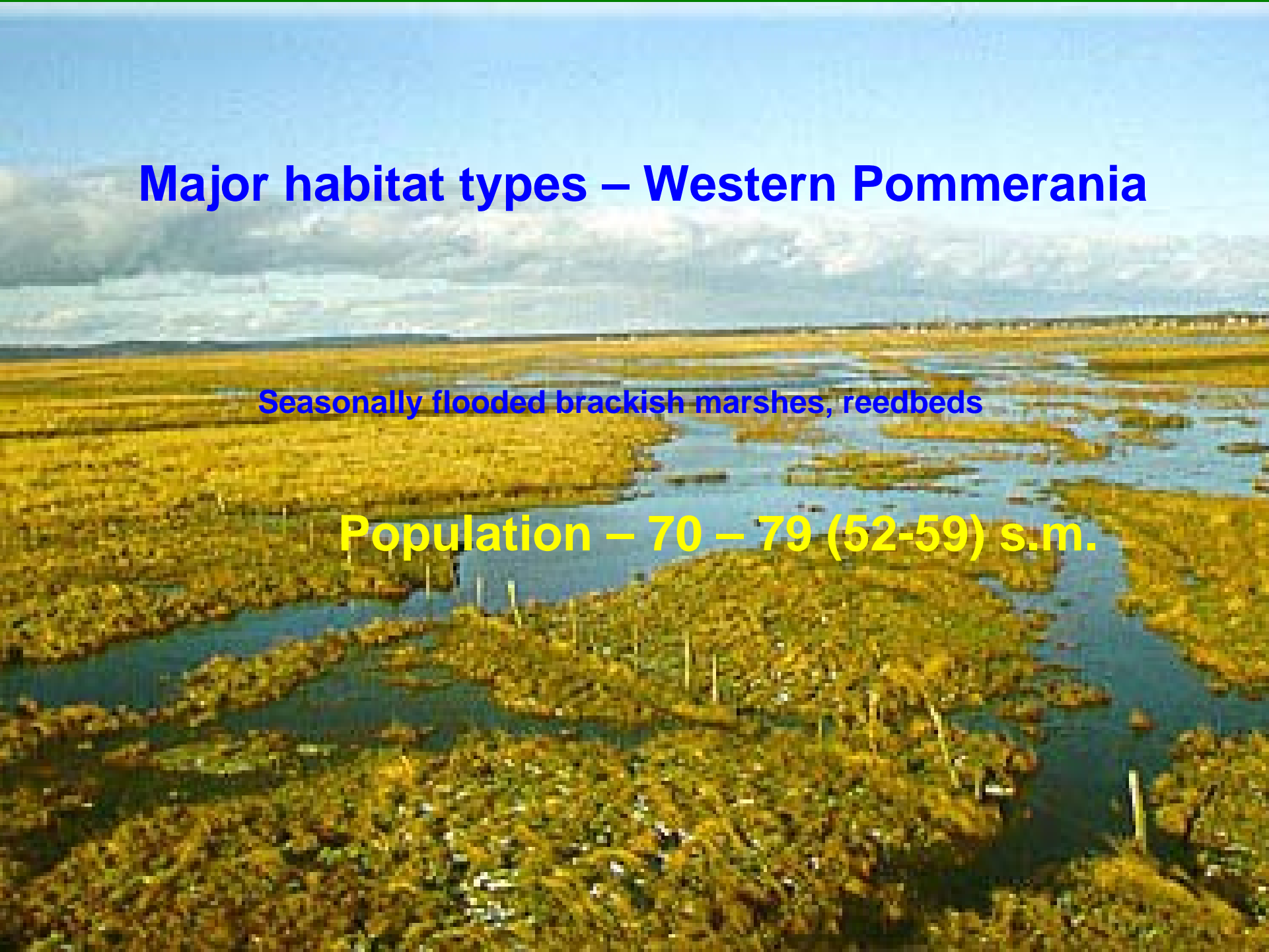
- wet marshy grasslands covered by high grass and clumps of sedges

Population – 557 - 607 s.m.

Major habitat types – Western Pommern

Seasonally flooded brackish marshes, reedbeds

Population – 70 – 79 (52-59) s.m.



Threats and limiting factors

The most serious threat is the progressive secondary vegetation succession in its open peatland explained by the following factors:

- **lowering of the ground water table by drainage works during the XIX-th, mid XX-th century land reclamation** (the annual net transition rate from open wetland to shrub in Biebrza NP is about 300 ha, or 0.5 % of the BNP area)
- **cessation of mowing, grazing and burning, the traditional types of land use,**





- 72 SPA's in Poland covering 8% of the country
- OTOP Shadow List - 144 SPA's in Poland covering 15% of the country





Conserving *Acrocephalus paludicola* in Poland and Germany

LIFE-Nature 2005-A1

 EUROPEAN COMMISSION ENVIRONMENT DG	FOR COMMISSION USE ONLY
	LIFE05NAT1

PROJECT

Project title (max. 60 characters):

Conserving *Acrocephalus paludicola* in Poland and Germany

Project acronym (max. 25 characters):

Aquatic Warbler project

The project will be implemented in the following Country(ies)

Poland and Germany

Administrative region(s)

Poland:

Województwo Zachodniopomorskie, Województwo Lubuskie, Województwo Podlaskie

Germany:

Land Mecklenburg-Vorpommern

Expected starting date: 01/05/2005... ending date: 31/05/2010 duration in months: 64.....

APPLICANT AND PARTNERS

- Name of applicant (1): Polish Society for the Protection of Birds (OTOP)
- Name of partner (2): Royal Society for the Protection of Birds (RSPB)
- Name of partner (3): North-Podlaskie Society for the Protection of Birds (PTOP)
- Name of partner (4): Western Pomeranian Ornithological Society (ZTO)
- Name of partner (5): Wolin National Park
- Name of partner (6): Biebrza National Park
- Name of partner (7): Förderverein Peonetal Natur eV (Germany)

PROJECT BUDGET AND REQUESTED EC FUNDING

Total project budget: 4,243,725 €

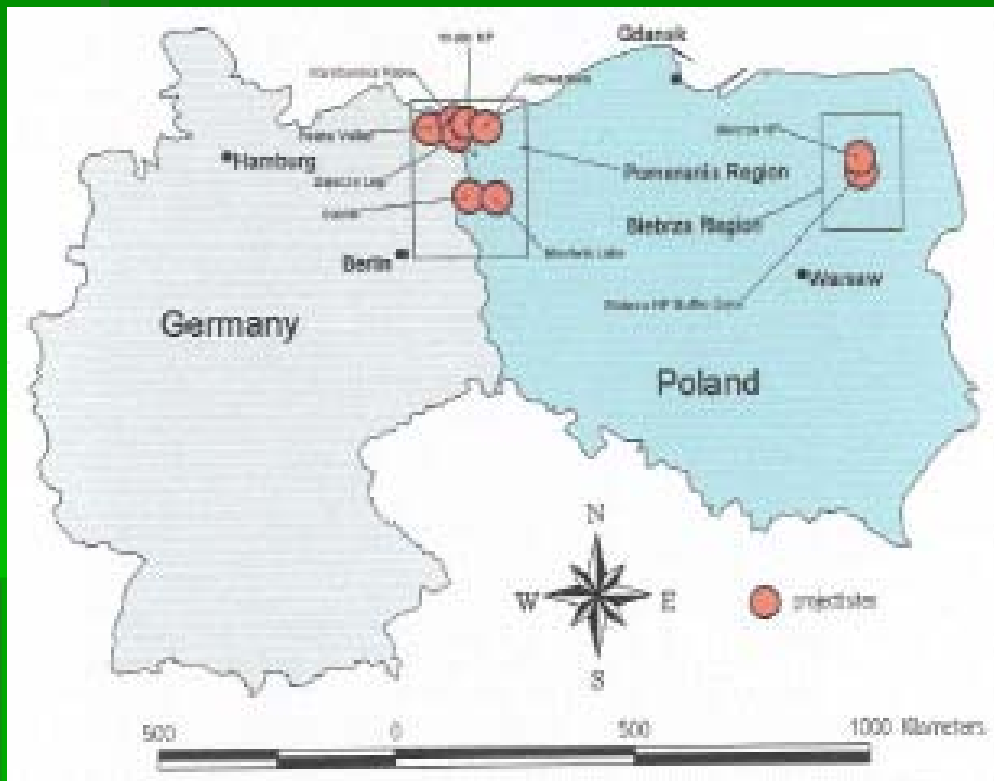
EC financial contribution requested: 4,660,794 € (= 70% of total budget)

PROJECT POLICY AREA

The project aims at the conservation of (choose only one category):

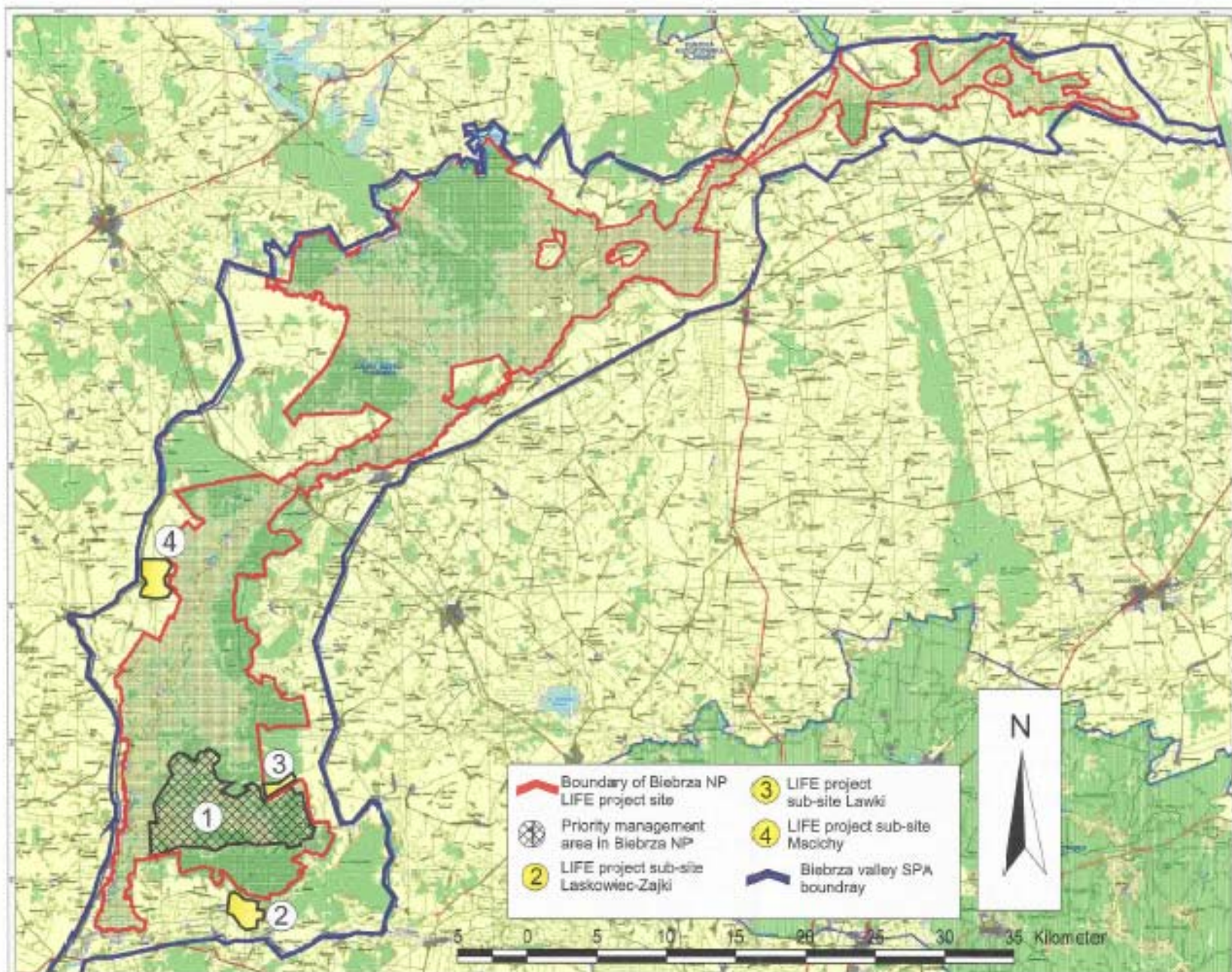
- NA1 proposed Sites of Community Importance (for EU only) or sites of international importance hosting habitats/species listed in the relevant resolutions of the Bern Convention (for Romania only);
- NA2 Sites designated as Special Protection Areas (for EU only) or sites of international importance hosting bird species listed in the relevant resolutions of the Bern Convention (for Romania only);
- NA3 one or more endangered species of fauna and flora Annex II and IV of the Habitats Directive, Annex I of the Birds Directive (for EU only) and Appendix I and II to the Bern Convention (for Romania only).

Conserving *Acrocephalus paludicola* in Poland and Germany



- Total project budget: 6.243.725 Euro
- Project target the breeding sites of 76% of the EU species population.

MAP B02-02. Location of LIFE project sites in Biebrza Valley: Biebrza NP and Biebrza NP Buffer Zone
(with sub-sites Laskowiec-Zajki, Mscichy and Lawki)



Conserving *Acrocephalus paludicola* in Poland and Germany

- The proposed actions include different water management works, clearance of the sites from trees and scrubs and establishing of regular mowing or extensive grazing
- An array of innovative action are proposed: energetic use of biomass from wetlands, feasibility of controlled burning as a potential management tool, new reed harvesting methods.





Conserving *Acrocephalus paludicola* in Poland and Germany

- An emphasis is put on the development and testing of cost effective management measures (agreements with local land users) and alternative sources of income (thermo-energetic use of biomass).
- Implementation of project activities (moving, supervision of grazing) will be conducted by local people thus involving them in active nature conservation. The project will aim to develop agro-environmental schemes for traditional farmers.



Conserving *Acrocephalus paludicola* in Poland and Germany

- In order to stop plant succession and conserve open non-forest wetland the Management Plan envisages moving of an area of 32, 562 ha, including 8,000 ha where bushes will be removed first.
- To improve hydrological conditions, 26 dams have been built in ditches to date.
- The existing ditches will be blocked along their length at the site by dumping biomass into ditches in course of vegetation moving action.





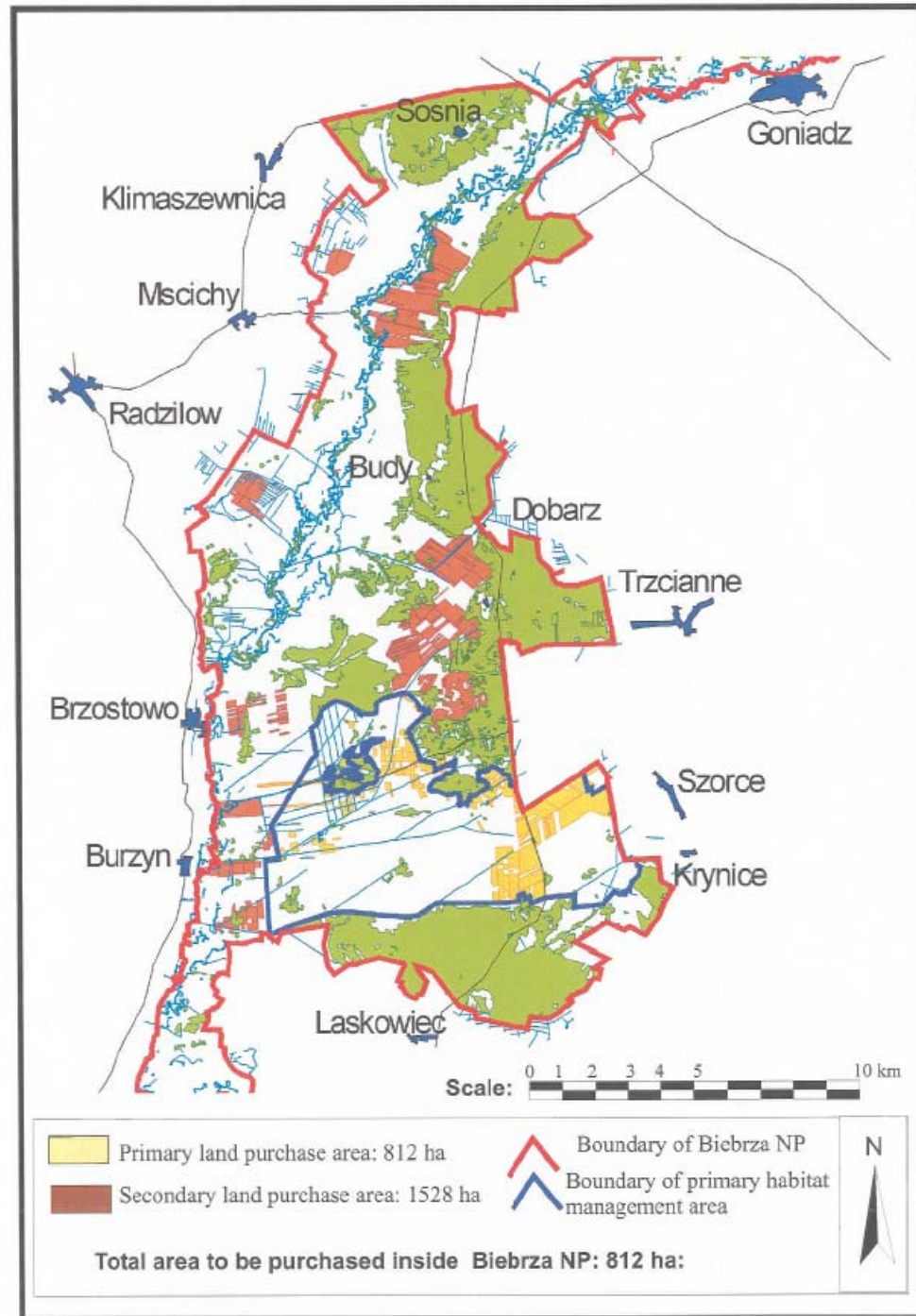
Conserving *Acrocephalus paludicola* in Poland and Germany

- One of the aims of the project is to test, develop and lobby for a new agri-environmental schemes, which would benefit Aquatic warbler habitat.
- Schemes will be tested and recommended for the management of wet meadows and mires.

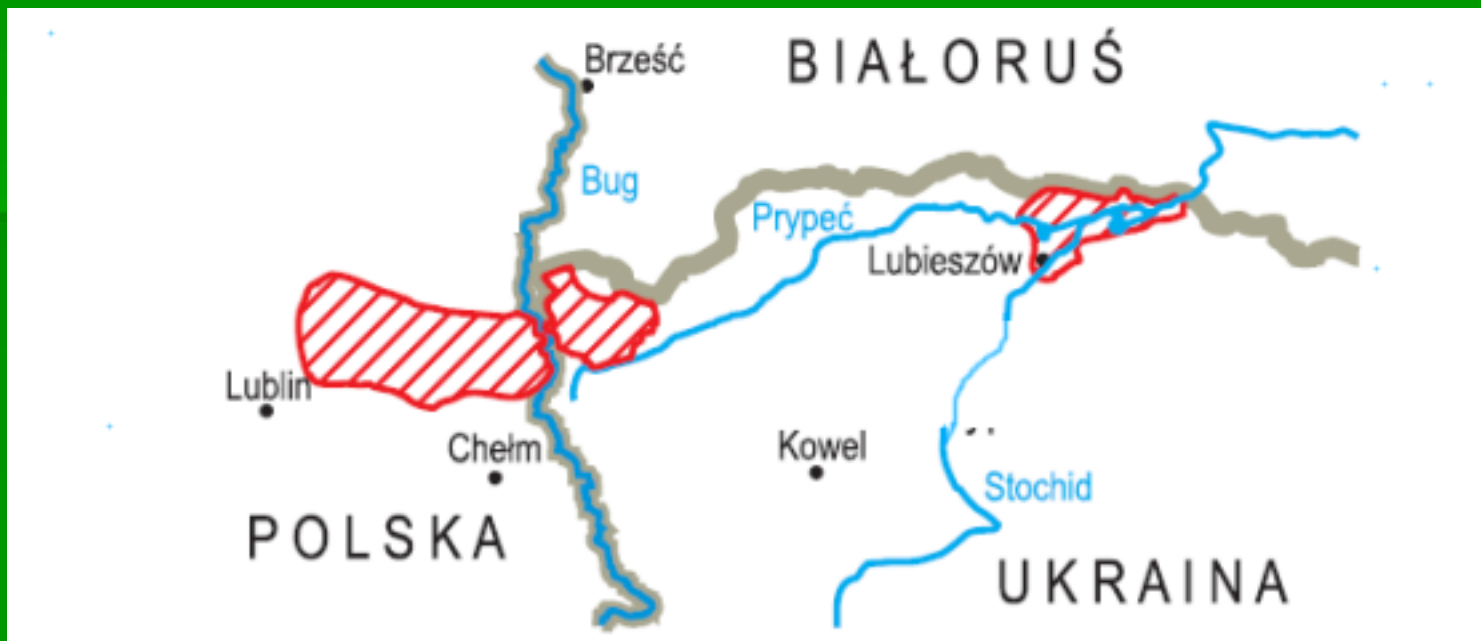




- Active land management is planned on 1228 ha, 812 ha of these need to be bought.



International Biosphere Reserve West Polesie



UNESCO

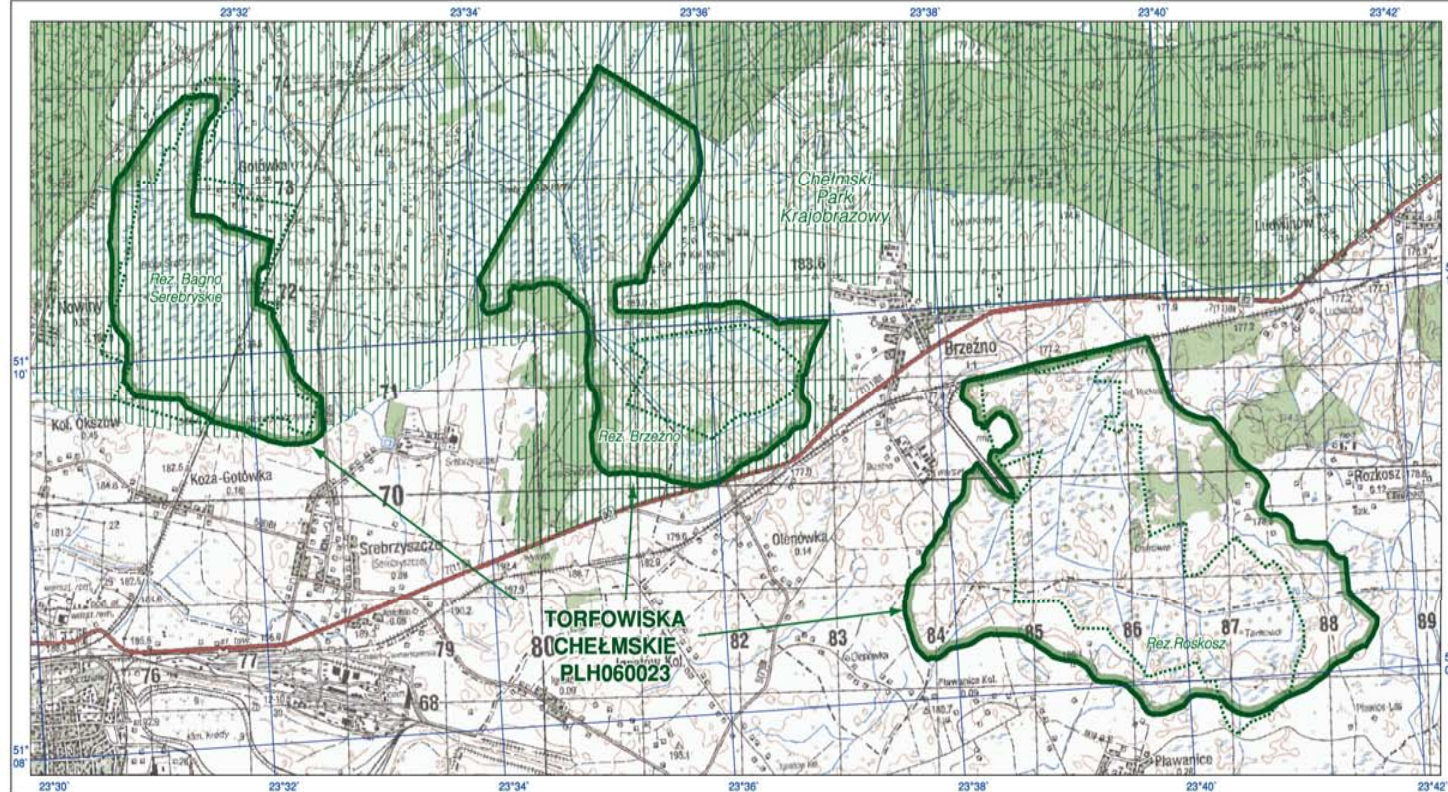
Man and the Biosphere (MAB) Programme

Meeting for the establishment of a Polesie transboundary
Biosphere Reserve and Regional Ecological Network in Belarus,
Poland and Ukraine.

Turow, Belarus, September 2004



SPA PLB 060002 "Chełm Marshes"



NATURA 2000
Habitats Directive

Ministerstwo Środowiska

PLH060023
TORFOWISKA CHEŁMSKIE






map produced on 10th March 2004

Scale 1: 50 000



arkusz/sheet 1 of 1

Projection: Albers
Units: meter
Spheroid: sphere
Projection parameters
1st standard parallel: 50 30' 0.000"
2nd standard parallel: 53 30' 0.000"
Central meridian: 19 0' 0.000"
Latitude of projection's origin: 52 0' 0.000"
False easting (meters): 0.00000
False northing (meters): 0.00000

-  granice SOO
-  SCI boundaries
-  parki narodowe
national parks
-  parki krajobrazowe
landscape parks
-  rezerваты przyrody
nature reserves



ECOFUND
POLISH DEBT FOR ENVIRONMENT
SWAP

Any conservation activities without long term site management plan
may be erratic and have little actual effect on habitat
and Aquatic Warbler

Management plan for SPA PLB 060002 “Chelm Mrashes”

Chelm marshes - old, but still effective drainage system







Thank you!

Fot. Wiktor Wolkow