



AW in NP Warta Mouth

F. Tanneberger (Greifswald University)



Ernst Moritz Arndt
Universität Greifswald

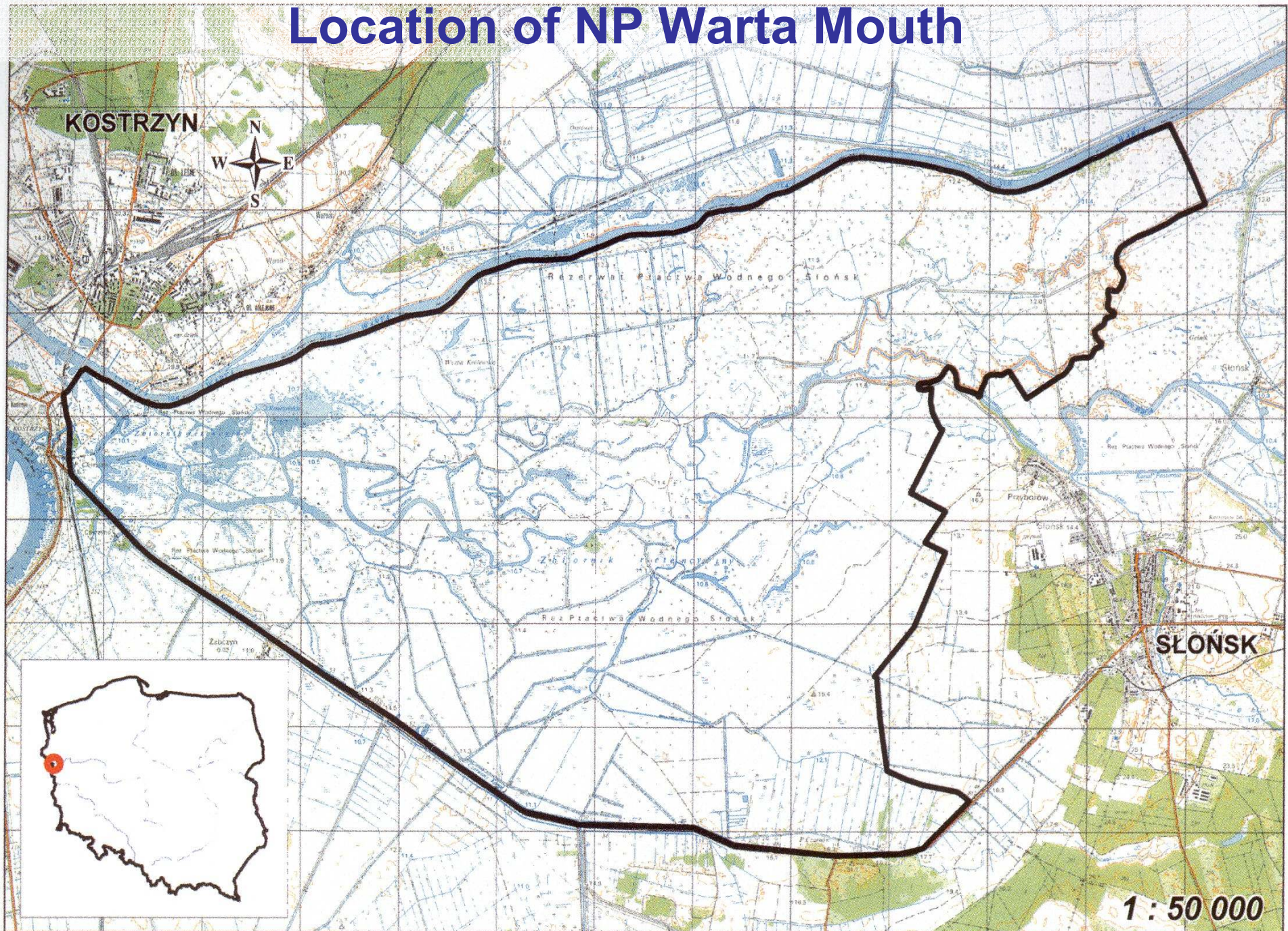


Studienstiftung
des deutschen Volkes

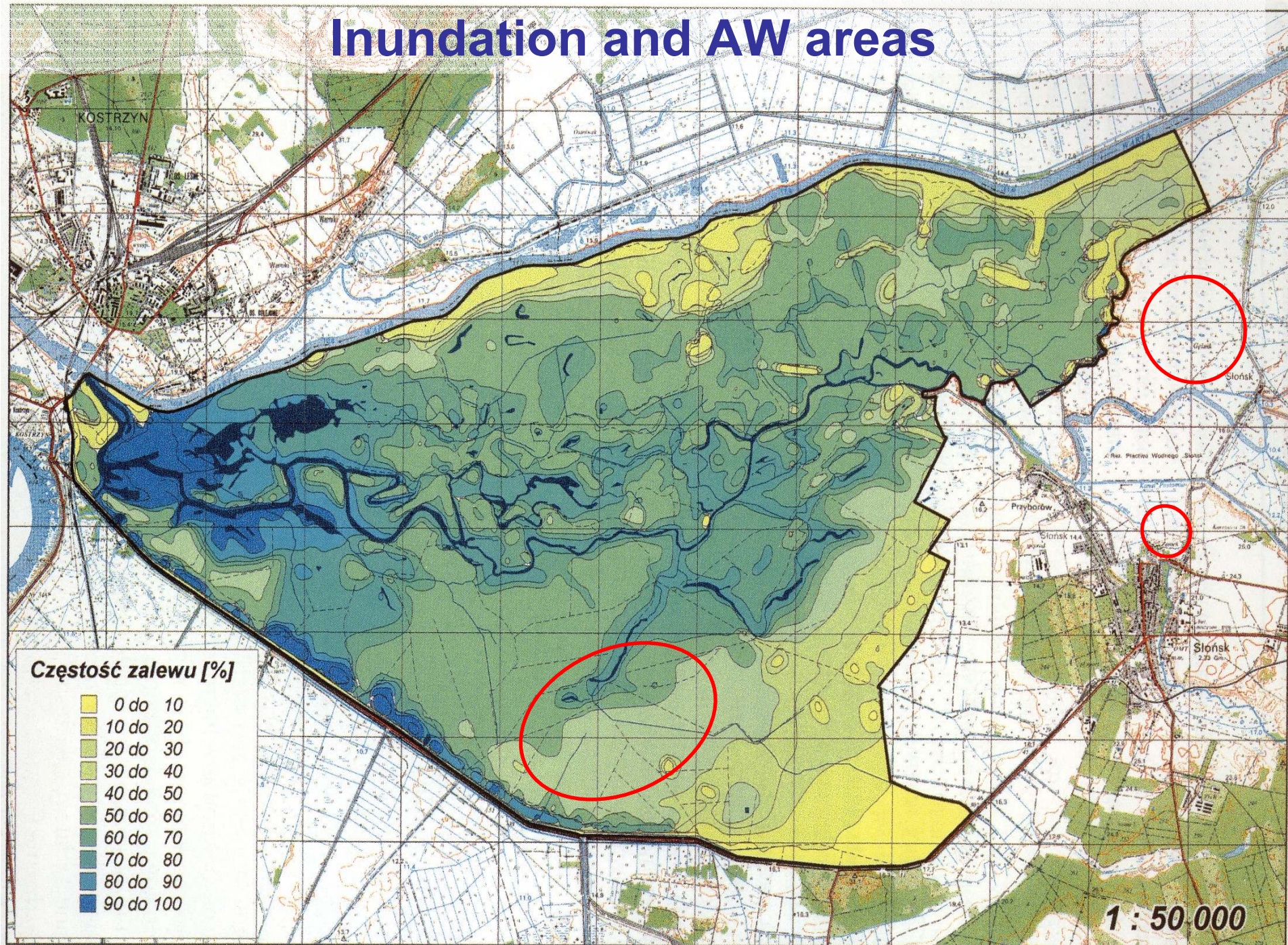


Sponsored by the Scholarship
Programme of the German
Federal Environmental Foundation
DBU
Deutsche Bundesstiftung Umwelt

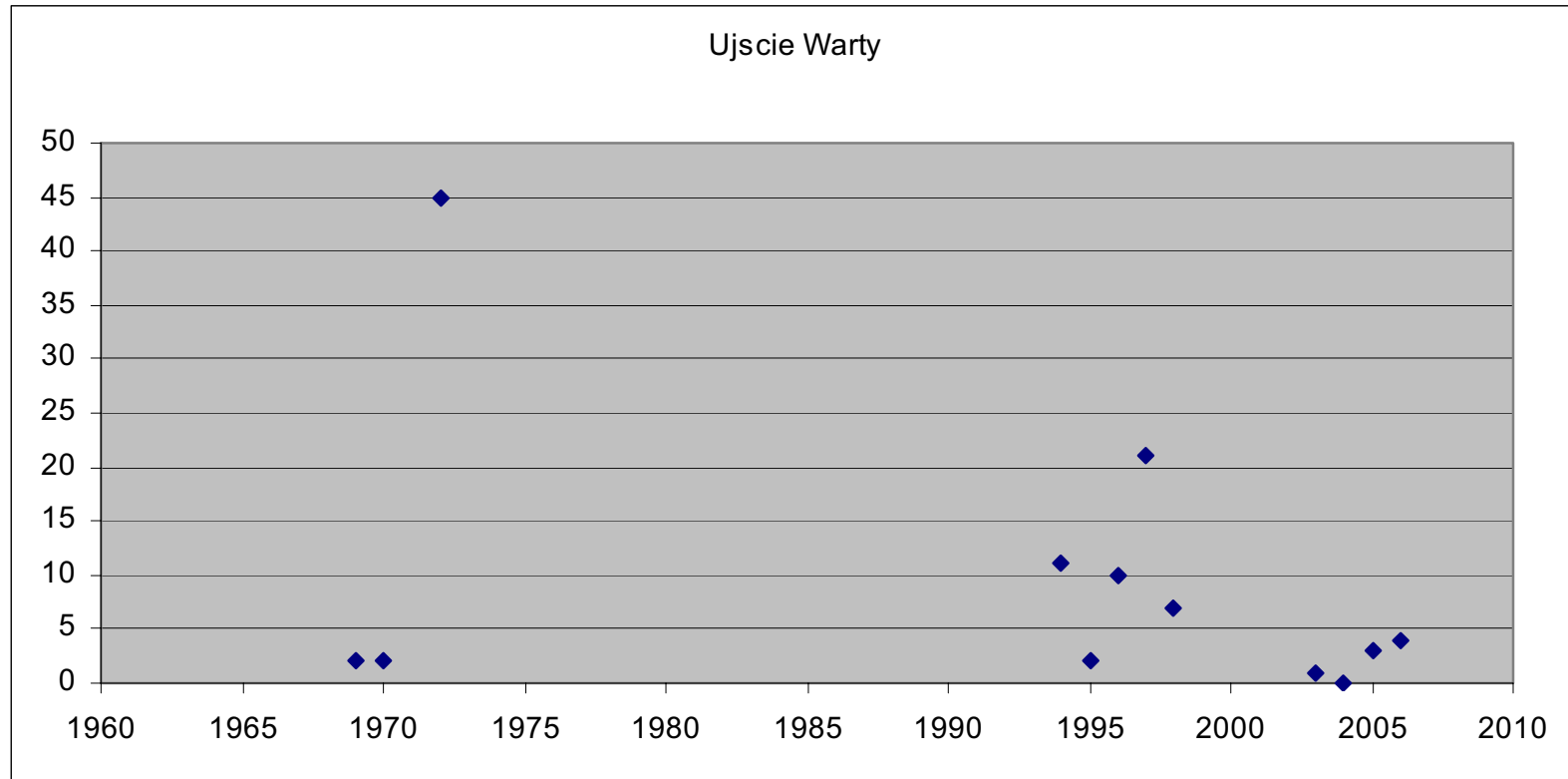
Location of NP Warta Mouth

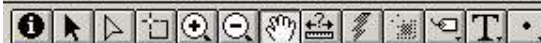


Inundation and AW areas



Conservation status: Population trend

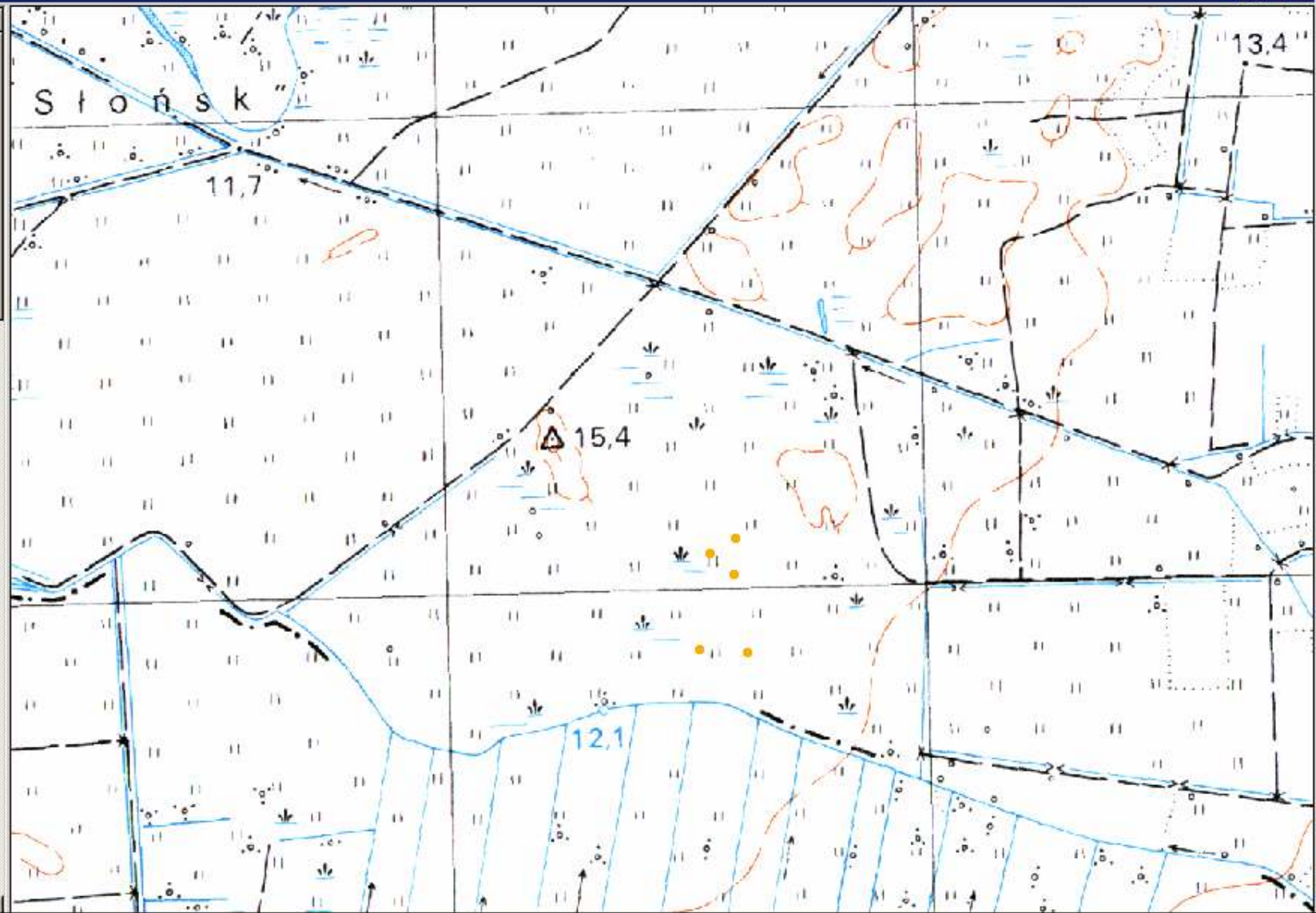




Scale 1:11,802

5,483,059.21
5,824,064.48

- Aw sl 2006.d bf
- Sr_punkte_210686.
- Sr_reviere_97.shp
- Sr_reviere_03.shp
- Sg_reviere_04.shp
- Sr_2005_ft.shp
- Aw_kk_1993.shp
- Aw_kk_2004-1.shp
- Aw_kk_2004-2.shp
- Aw_kk_2005-1.shp
- Aw_kk_2005-2.shp
- Veg_Sagin_2005.shp
- Aw_ro_1993.shp
- Aw_ro_2004.shp
- Aw_ro_2003.shp
- Aw_ro_2005.shp
- RO_Vegzonen.shp





Conservation status: Threats

Habitat loss due to

- ▶ **succession after abandonment**
- ▶ **unsuitable water regime**

Nest loss due to

- ▶ **to early mowing/grazing**





Monitoring activities

- ▶ monitoring not sufficient
 - ▶ 2003/04 accidental records by visiting ornithologists
 - ▶ 2005/06 records by PhD study



Conservation activities

- ▶ Mowing of 90 ha of former AW habitat by Park staff using EU money (partly also biomass removed)
- ▶ Securing of late mowing/grazing in current AW habitats
- ▶ Support of research into key habitat factors and restoration potential



Achievements

- ▶ 90 ha former AW habitat mown in 2005 and 2006
- ▶ accompanying vegetation monitoring following LIFE monitoring scheme (by Lena Wojciechowska)



Challenges

- ▶ Securing monitoring 2007 onwards
- ▶ Securing appropriate management
- ▶ Incorporating AW LIFE findings into NP AW management strategy

