

A landscape photograph of a green field with a rainbow in a cloudy sky. The rainbow is the central focus, arching across the sky. The field is lush and green, with some trees visible in the distance. The sky is filled with soft, grey clouds, suggesting a recent rain or an approaching storm. The overall mood is serene and natural.

AW monitoring programme in Belarus 2006-2007

Designing the monitoring scheme and
estimating national AW population

Viktar Fenchuk, APB-BirdLife Belarus

AW in Belarus

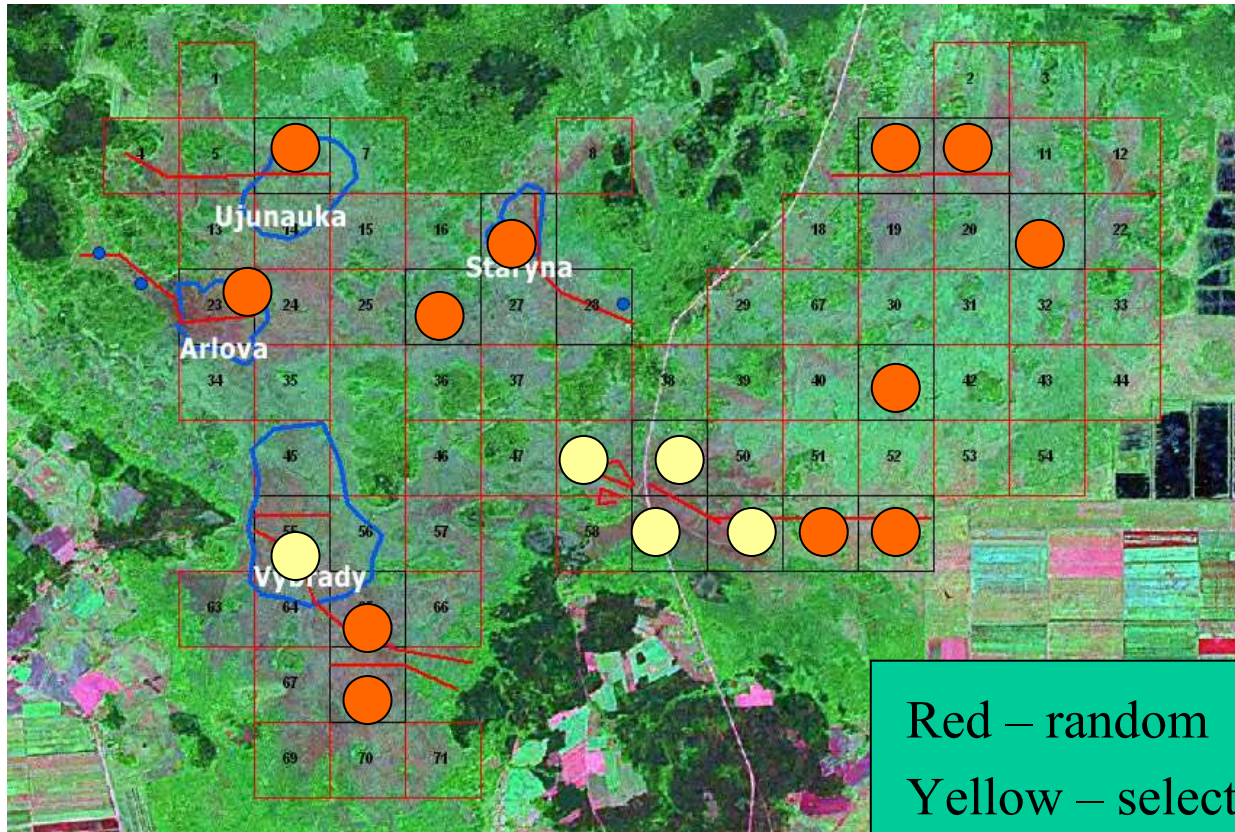


National count 2006-2007 in Belarus

Problems:

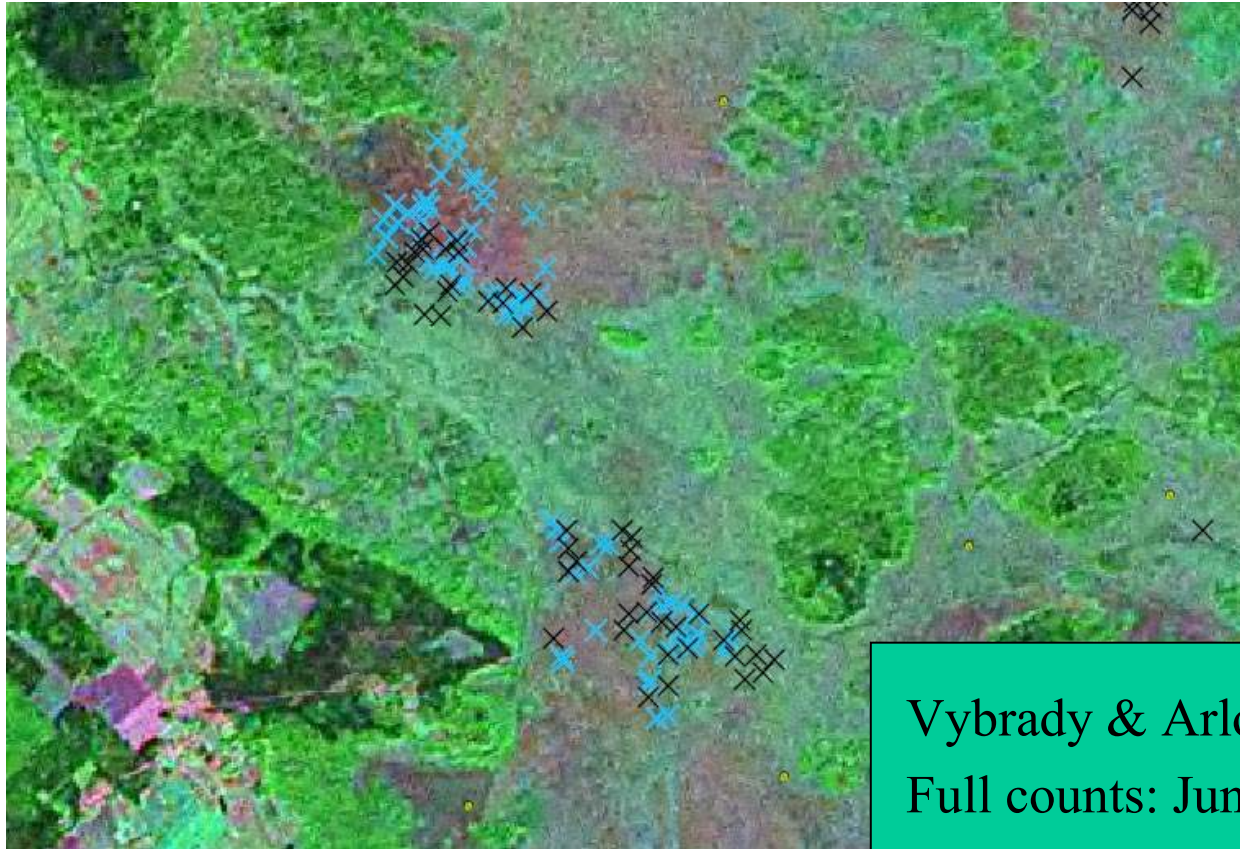
- exact distribution of AW within the sites was not known

Dzikaje mire - 2006



Red – random
Yellow – selected
Blue – estimated AW range

Dzikaje mire - 2007

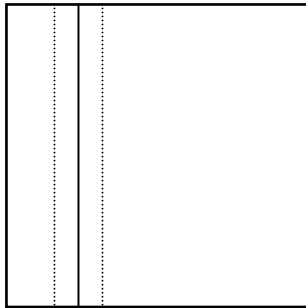


Vybrady & Arlova (Narev)
Full counts: June (black)
July (blue)

Dzikaje mire – population estimates

| | Locality | Dikaje 2006 – random squares | Dzikaje 2006 | | Dzikaje 2007 – full counts |
|--|----------------------------------|------------------------------------|--------------|----------------|-------------------------------|
| | | | Area | AW estimate | |
| | | | | | |
| | Vybrady | | 3 | 150 | 30 |
| | Arlova | | 1 | 30 | 42 |
| | Ujunauka | | 1 | 40? | 6 |
| | Staryna | | <1 | 45 | 8 |
| | Single vocalizing males | | | | |
| | Narau | | | 4 | 6 |
| | Staryna | | | 1 | 6 |
| | Alhouka | | | 4-5 | |
| | Potentially unknown sites | | | 50-100 | 50 |
| | | | | | |
| | Total | 710 | | 325-375 | 98-148 |

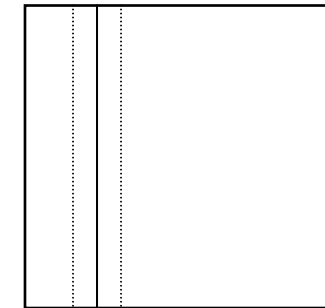
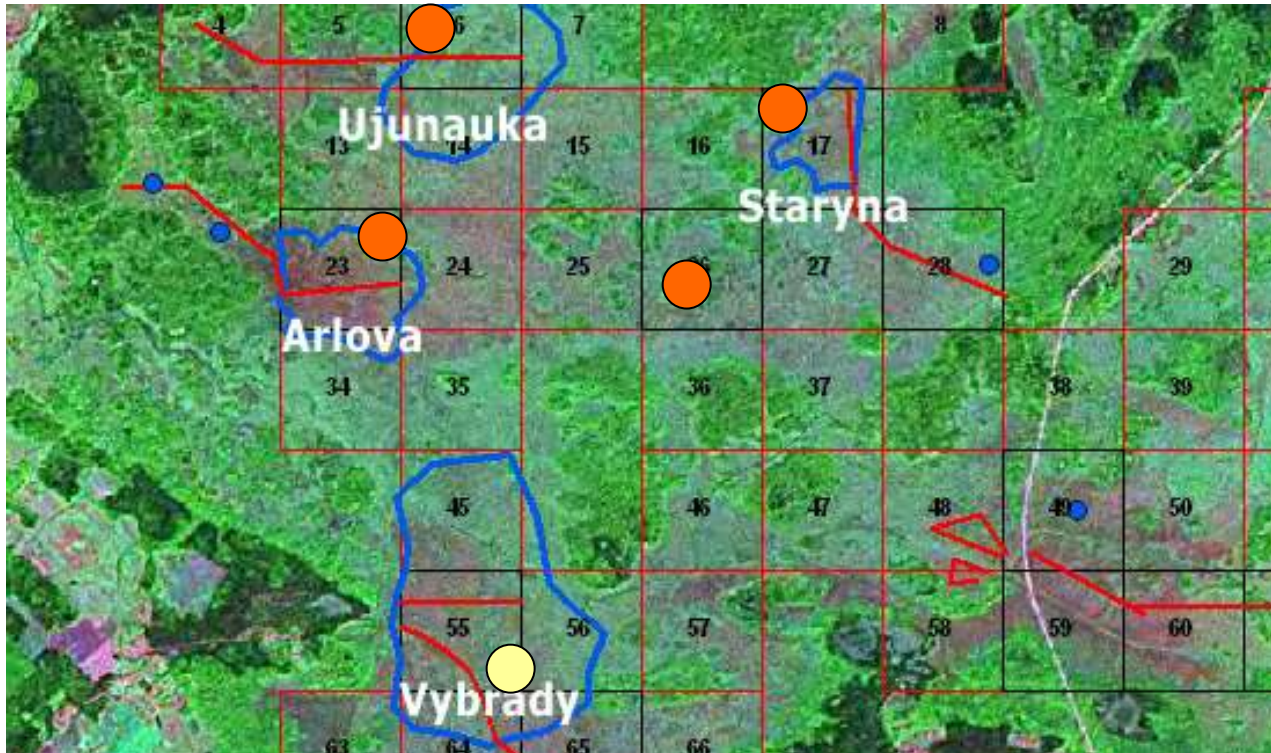
Dzikaje mire – random squares



The bias was introduced by the possibility of free choice of the monitoring plot in monitoring square.

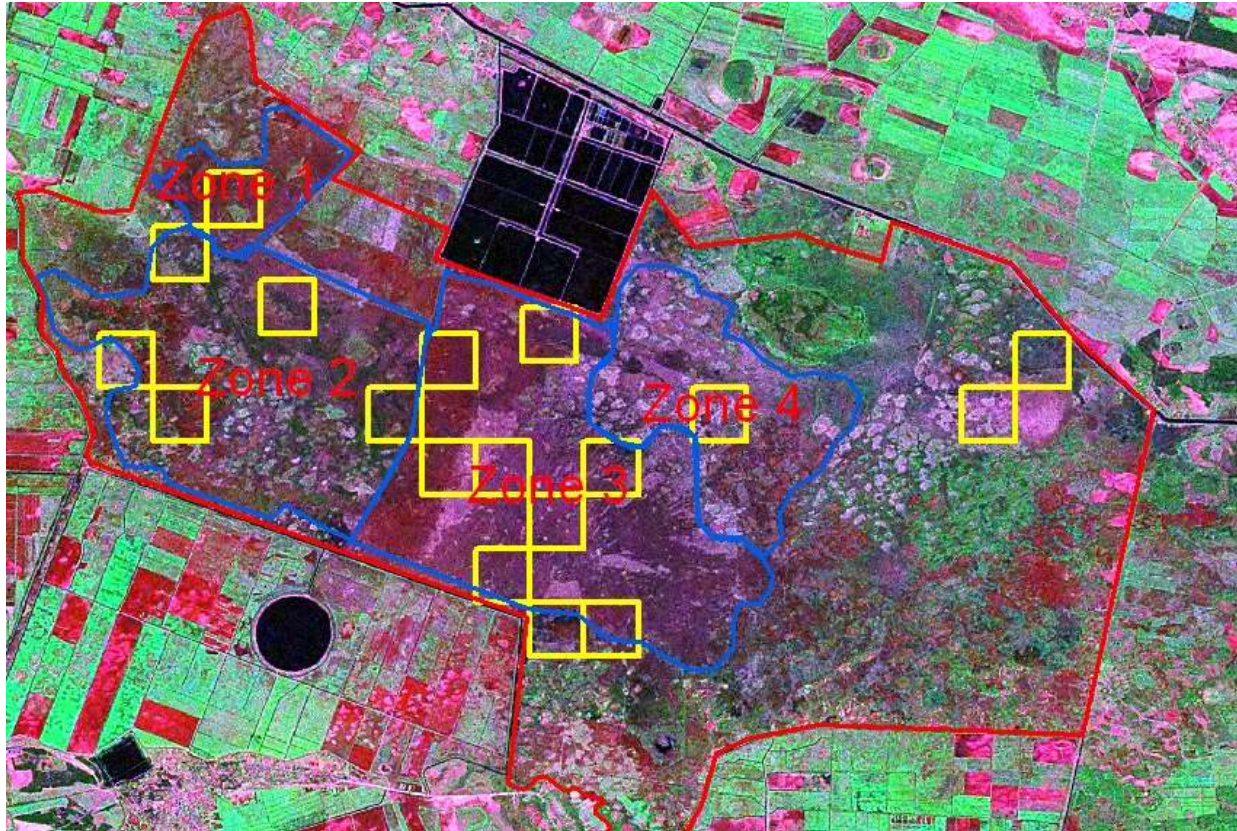
In most cases it was chosen with account of best access – which means more open mire and hence better AW habitats

Dzikaje mire – random squares



The bias was introduced by the possibility of free choice of the monitoring plot in monitoring square. In most cases it was chosen with account of best access – which means more open mire and hence better AW habitats

AW monitoring – other sites



Monitoring plots (routes) in monitoring squares were chosen depending on best access, too.

Zvanets:

AW estimate (1998-2005):

3000-8000 males

AW monitoring 2006
(permanent plots):
“standard” density

AW estimate 2006
random squares:
4841-5056 males

AW estimate 2006
(density/area):
4223-5159 males

Dzikaje:

AW estimate (1998-2005):
1200-1600 males

AW monitoring 2006
(permanent plots):
“standard” density

AW estimate 2006
random squares:
720 males

AW estimate 2006
(density/area):
325-375 males

Zvanets:

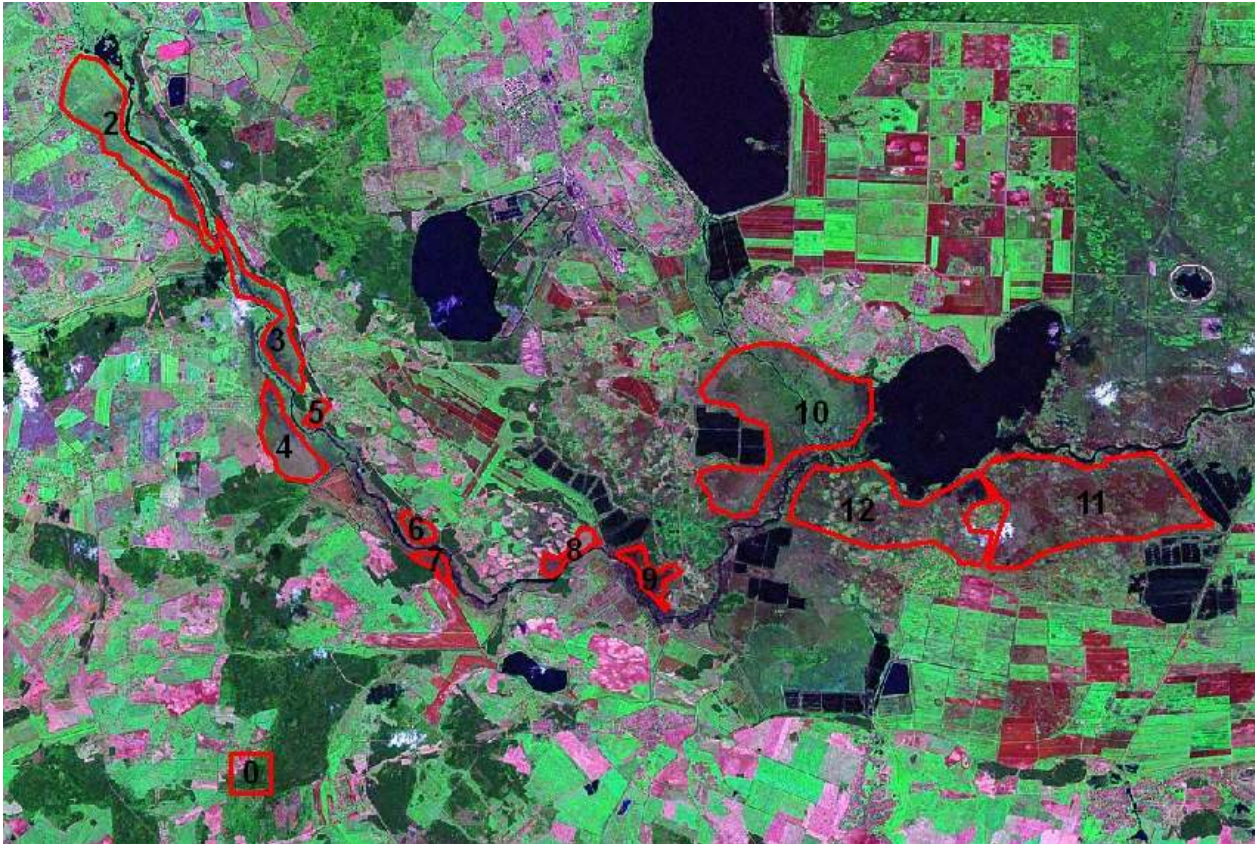
AW estimate (1998-2005):
3000-8000 males

AW monitoring 2006
(permanent plots):
“standard” density

AW estimate 2006
random squares:
4841-5056 males

AW estimate 2006
(density/area):
4223-5159 males

AW monitoring – other sites



Sporava:

AW estimate (1998-2005):

690-2120 males

AW estimate 2007
monitoring plots:
optimal density

AW estimate 2007 full
counts:

617-1016 males

AW monitoring – total population estimate

| | | AW estimate 1996-2005 | | AW estimate 2006-2007 | |
|----|-----------------------------|--------------------------|--|--------------------------|-------------|
| | | | | min | max |
| 1. | Zvanets and vicinity | 3000-8000 | | 4230 | 5168 |
| 2. | Sporava mire | 690-2120 | | 617 | 1016 |
| 3. | Dzikaje and vicinity | 1200-1600 | | 100 | 153 |
| 4. | Servach | 50-300 | | 34 | 41 |
| 5. | Almany mires | 150-200 | | 150 | 200 |
| 6. | | | | | |
| 7. | All other sites | <100 | | 16 | 50 |
| | | | | | |
| | | | | | |
| | Total estimate | 7,009 – 11,354 | | 5147 | 6628 |
| | | | | | |