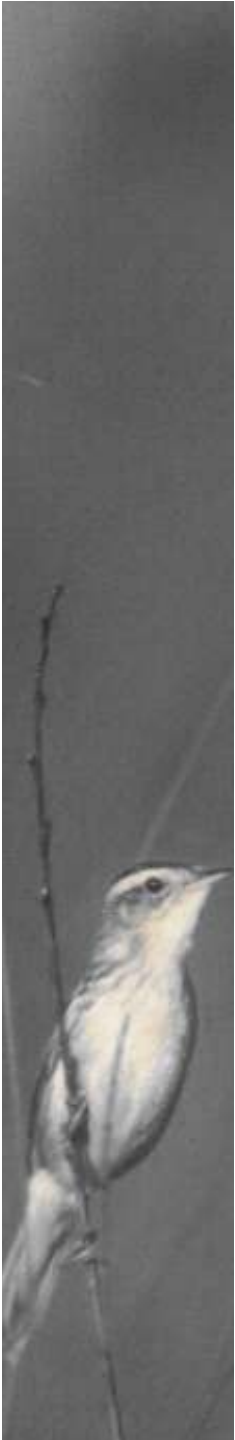


# **AW numbers in Pomerania and the AW Pomerania database**

Franziska Tanneberger



The number of vocalizing males of *Acrocephalus paludicola* in Biebrza NP+buffer zone and Pomerania at the end of the project is at the same level or higher than at the beginning of the project ( $t^0 \leq t^5$ ).

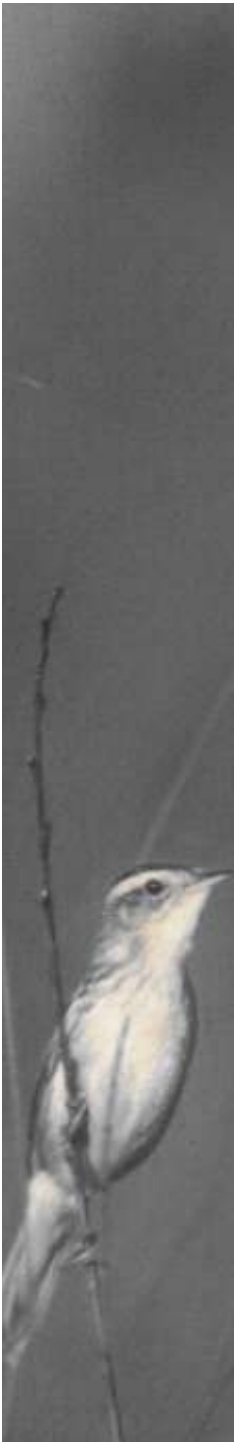
**To evaluate our habitat management activities (and to report to the EU!), we need reliable baseline data!**

## **Problem 1: no systematic data storage**

- storage: in various reports/file types
- records: important information partly missing (observer name(s), exact dates, coordinates)

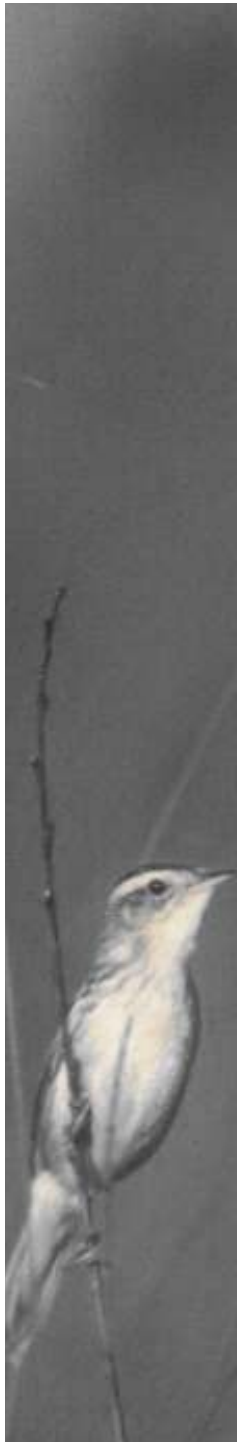
## **Problem 2: gaps**

- full counts in 1993, 1997, 2003, 2004 and (almost) in 2005-2007
- other years: mostly lacking



## Problem 3: population estimates based on non-synchronous counts

Site	Year	Date (first)	Type of vis	Minimum	Maximum	Observer	Map	Data source
Krajnik	1997	28.05.97	First	6	8	RC	Report1997_site-map_09#\	Report1997
PK Dolina Dolnej Odry (Międzyodrze)	1997	29.05.97	First	1	1	RC	Report1997_site-map_08#\	Report1997
Struskie Bagna	1997	03.06.97	First	0	0	RC	Report1997_site-map_07#\	Report1997
Miedwie	1997	04.06.97	First	4	7	RC	Report1997_site-map_10#\	Report1997
Łąki n. Regą	1997	10.06.97	First	4	4	RC	Report1997_site-map_01#\	Report1997
Półwysep Międzywódzki	1997	11.06.97	First	0	0	RC	Report1997_site-map_02#\	Report1997
Bagna Rozwarowskie	1997	12.06.97	First	28	28	RC	Report1997_site-map_03#\	Report1997
Karsiborska Kępa	1997	13.06.97	First	68	68	RC	Report1997_site-map_05#\	Report1997
Zajęcze Łęgi	1997	13.06.97	First	31	31	SP	Report1997_site-map_05#\	Report1997
Koprzywskie Łęgi	1997	14.06.97	First	3	3	RC	Report1997_site-map_05#\	Report1997
Wydrza Kępa	1997	14.06.97	First	5	5	SP	Report1997_site-map_05#\	Report1997
Półwysep Rów	1997	15.06.97	First	1	1	RC	Report1997_site-map_04#\	Report1997
Koński Smug	1997	17.06.97	First	0	0	RC	Report1997_site-map_05#\	Report1997
Warnie Kępy	1997	17.06.97	First	75	75	RC	Report1997_site-map_05#\	Report1997
PN Ujście Warty k. Słomska	1997	20.06.97	First	21	23	RC	Report1997_site-map_11#\	Report1997
Łąki k. Łubnicy	1997	22.06.97	First	0	0	RC	Report1997_site-map_08#\	Report1997
Łąki k. Żabnicy	1997	22.06.97	First	0	0	RC	Report1997_site-map_08#\	Report1997
Łąki Skoszewskie	1997	27.06.97	First	0	0	SP	Report1997_site-map_06#\	Report1997
NLP Unteres Odertal	1997			25	25			
<b>Total</b>				<b>272</b>	<b>279</b>			
PK Dolina Dolnej Odry (Międzyodrze)	1997	23.06.97	Second	1	1	RC	Report1997_site-map_08#\	Report1997
Krajnik	1997	24.06.97	Second	7	7	RC	Report1997_site-map_09#\	Report1997
Miedwie	1997	25.06.97	Second	7	7	RC	Report1997_site-map_10#\	Report1997
Karsiborska Kępa	1997	26.06.97	Second	69	71	RC	Report1997_site-map_05#\	Report1997
Zajęcze Łęgi	1997	26.06.97	Second	45	45	RC	Report1997_site-map_05#\	Report1997
Bagna Rozwarowskie	1997	28.06.97	Second	22	22	RC	Report1997_site-map_03#\	Report1997
Półwysep Rów	1997	29.06.97	Second	1	1	RC	Report1997_site-map_04#\	Report1997
Łąki n. Regą	1997	04.07.97	Second	0	0	RC	Report1997_site-map_01#\	Report1997
PN Ujście Warty k. Słomska	1997	06.07.97	Second	8	8		Report1997_site-map_11#\	Report1997
NLP Unteres Odertal	1997			25	25			
<b>Total</b>				<b>185</b>	<b>187</b>			



# Problem 3: population estimates based on non-synchronous counts



All-country survey of  
condition and  
This pro  
Active protection of the  
- t

		2003		
		min	max	
<b>POMORZE ZACH</b>		<b>81</b>	<b>68</b>	
	Zaj Legi	4	0	
	KK	16	13	
WPN	Warnie	24	24	
	Gesia	10	8	N
	Wiszowa K	4	5	
	Koński S	2	5	
	Koprzywskie	2	0	
	Wydrza	0	3	
	<b>RazemWP</b>	<b>42</b>	<b>45</b>	
	Rozwarowskie	4	0	
	Krajnik	10	8	
	Miedwie	5	2	
	Slonsk	0	0	



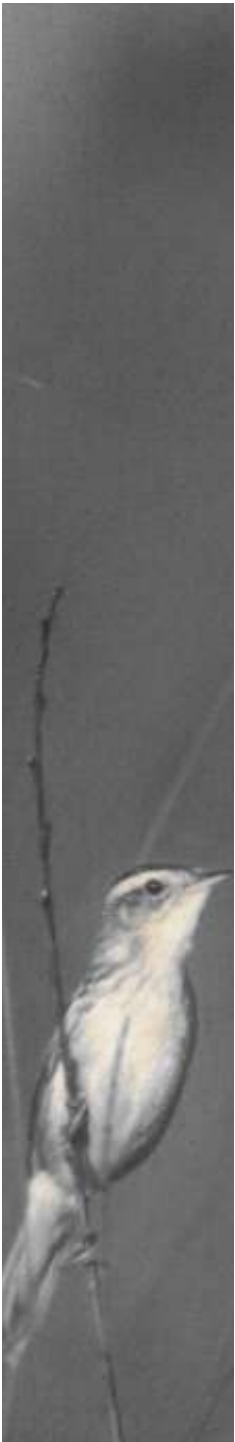
# What to do?

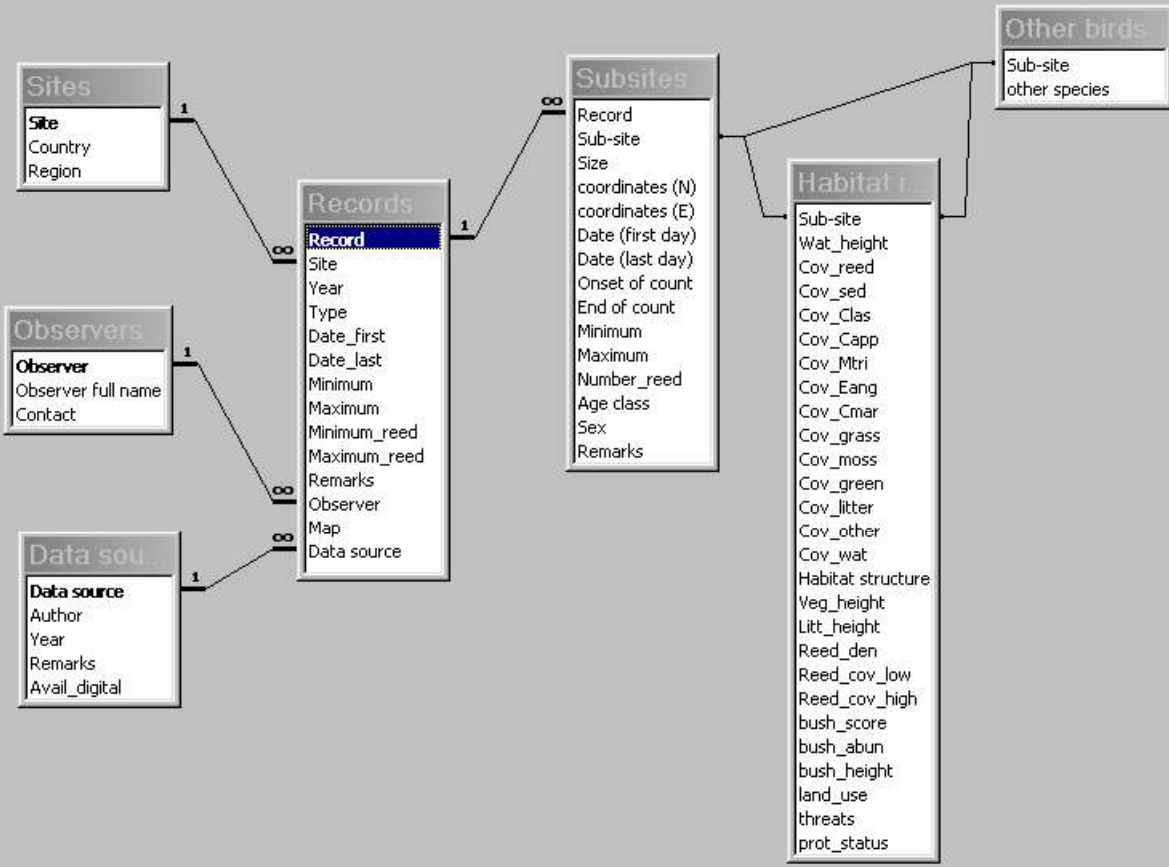
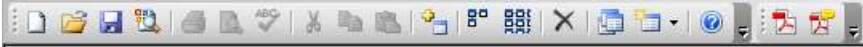
Problem 1: no systematic data storage

→ establish database

**the database has advanced much thanks to  
Susanne Bärtsch (OTOP intern in spring  
2007): population and habitat data of the full  
counts are included**

→ collect lacking information from observers  
**has been started by OTOP and will be continued  
over winter – please help!**





Microsoft Access - [Records : Tabelle]

Datei Bearbeiten Ansicht Einfügen Format Datensätze Extras Fenster ? Adgbe PDF



Site	Year	Type	Date_first	Date_last	Minimum	Maximum	Minimum_reed	Maximum_reed	Remarks	Observer	Map	Data source
Bagna Rozwarowskie	1993	First	16.06.1993	17.06.1993	37	37				RC	<a href="#">Report1993 site-map 08</a>	Report1993
Bagna Rozwarowskie	2005	First	24.05.2005	25.05.2005	18	21	18	21		MD		Report2005
Bagna Rozwarowskie	1997	First	12.06.1997	19.06.1997	28	28	11	11		RC	<a href="#">Report1997 site-map 03</a>	Report1997
Bagna Rozwarowskie	2003	First	05.06.2003	15.07.2003	4	4	3	3		RC	<a href="#">Report2003 site-map 03</a>	Report2003
Bagna Rozwarowskie	2004	First	21.05.2004	23.05.2004	0	0	0	0	? no birds or not counted?	MD	<a href="#">Report2004 site-map 05</a>	Report2004
Gęsia Kępa	2003	First	10.06.2003	10.06.2003	10	10	10	10		MD		Report2003
Jez. Koprowo_Koprzywskie Łęgi	2003	First	24.05.2003	24.05.2003	0	0	0	0		RC	<a href="#">Report2003 site-map 04</a>	Report2003
Jez. Koprowo_Koprzywskie Łęgi	1993	First	11.06.1993	11.06.1993	0	0	0	0		RC	<a href="#">Report1993 site-map 04</a>	Report1993
Karsiborska Kępa	1993	First	10.06.1993	10.06.1993	35	35				RC	<a href="#">Report1993 site-map 01</a>	Report1993
Karsiborska Kępa	2004	First	21.05.2004	23.05.2004	19	19				GK	<a href="#">Report2004 site-map 02</a>	Report2004
Karsiborska Kępa	1997	First	13.06.1997	13.06.1997	68	68				RC	<a href="#">Report1997 site-map 05</a>	Report1997
Karsiborska Kępa	2003	First	13.06.2003	14.06.2003	13	15	13	15	14.06.03 05:00-07:00	RC	<a href="#">Report2003 site-map 01</a>	Report2003
Karsiborska Kępa	2005	First	20.05.2005	22.05.2005	15	15	15	15		PJ	<a href="#">Report2005 site-map 01</a>	Report2005
Koński Smug	1993	First	09.06.1993	10.06.1993	0	0	0	0	10.06.93 04:00-05:00	RC	<a href="#">Report1993 site-map 02</a>	Report1993
Koński Smug	2003	First	05.06.2003	05.06.2003	2	2				MD		Report2003
Koński Smug	1997	First	17.06.1997	17.06.1997	0	0	0	0		RC	<a href="#">Report1997 site-map 05</a>	Report1997
Koprzywskie Łęgi	2003	First	27.05.2003	27.05.2003	2	2	2	2		MD		Report2003
Koprzywskie Łęgi	1993	First	10.06.1993	10.06.1993	0	0	0	0		RC	<a href="#">Report1993 site-map 02</a>	Report1993
Koprzywskie Łęgi	1997	First	14.06.1997	14.06.1997	3	3	3	3		RC	<a href="#">Report1997 site-map 05</a>	Report1997
Krajnik	2003	First	31.05.2003	31.05.2003	10	10	0	0		GK	<a href="#">Report2003 site-map 13</a>	Report2003
Krajnik	1993	First	05.06.1993	05.06.1993	15	15				RC	<a href="#">Report1993 site-map 06</a>	Report1993
Krajnik	1997	First	28.05.1997	28.05.1997	6	8	0	0		RC	<a href="#">Report1997 site-map 09</a>	Report1997
Krajnik	2004	First	21.05.2004	23.05.2004	7	7				GK	<a href="#">Report2004 site-map 07</a>	Report2004
Łąki Drożkowe	2003	First	02.06.2003	02.06.2003	0	0	0	0		IK		Report2003
Łąki k. Inoujścia	1993	First	16.07.1993	16.07.1993	0	0	0	0		RC	<a href="#">Report1993 site-map 13</a>	Report1993
Łąki k. Komarowa	1993	First	18.06.1993	18.06.1993	0	0	0	0		RC	<a href="#">Report1993 site-map 12</a>	Report1993
Łąki k. Lędzina	2003	First	24.05.2003	24.05.2003	0	0	0	0		RC	<a href="#">Report2003 site-map 05</a>	Report2003
Łąki k. Łubnicy	1997	First	22.06.1997	22.06.1997	0	0	0	0		RC	<a href="#">Report1997 site-map 08</a>	Report1997
Łąki k. Łubnicy	1993	First	13.06.1993	13.06.1993	0	0	0	0		RC	<a href="#">Report1993 site-map 15</a>	Report1993
Łąki k. Modrzewi	1993	First	20.06.1993	20.06.1993	0	0	0	0		RC	<a href="#">Report1993 site-map 18</a>	Report1993
Łąki k. Porzecza	2003	First	11.07.2003	11.07.2003	0	0	0	0		RC	<a href="#">Report2003 site-map 16</a>	Report2003
Łąki k. Żabnicy	1997	First	22.06.1997	22.06.1997	0	0	0	0		RC	<a href="#">Report1997 site-map 08</a>	Report1997
Łąki k. Żabnicy	2003	First	15.07.2003	15.07.2003	0	0	0	0		RC	<a href="#">Report2003 site-map 11</a>	Report2003
Łąki k. Żabnicy	1993	First	13.06.1993	13.06.1993	0	0	0	0		RC	<a href="#">Report1993 site-map 15</a>	Report1993
Łąki m. Trzebieżą a Jasienicą	1993	First	12.06.1993	12.06.1993	0	0	0	0		RC	<a href="#">Report1993 site-map 07</a>	Report1993
Łąki n. jez. Będgoszcz	1993	First	15.06.1993	15.06.1993	0	0	0	0		RC	<a href="#">Report1993 site-map 10</a>	Report1993
Łąki n. jez. Dąbie	2003	First	20.06.2003	08.07.2003	0	0	0	0		RC	<a href="#">Report2003 site-map 10</a>	Report2003
Łąki n. jez. Resko Przymorskie	2003	First	14.06.2003	14.06.2003	0	0	0	0		RC	<a href="#">Report2003 site-map 07</a>	Report2003
Łąki n. jez. Zaborsko	1993	First	15.06.1993	15.06.1993	0	0	0	0		RC	<a href="#">Report1993 site-map 11</a>	Report1993
Łąki n. Regą	1997	First	10.06.1997	10.06.1997	4	4	0	0		RC	<a href="#">Report1997 site-map 01</a>	Report1997
Łąki n. Regą	2005	First	24.05.2005	24.05.2005	0	0	0	0		MK	<a href="#">Report2005 site-map 03</a>	Report2005
Łąki n. Regą	1993	First	18.05.1993	19.05.1993	6	6			19.05.93 4:00-5:30	RC	<a href="#">Report1993 site-map 16</a>	Report1993
Łąki n. Regą	2004	First	21.05.2004	23.05.2004	0	0	0	0		MK	<a href="#">Report2004 site-map 06</a>	Report2004
Łąki n. Regą	2003	First	24.05.2003	24.05.2003	0	0	0	0		RC	<a href="#">Report2003 site-map 06</a>	Report2003
Łąki Skoszewskie	1997	First	27.06.1997	27.06.1997	0	0	0	0		SP	<a href="#">Report1997 site-map 06</a>	Report1997
Łąki Skoszewskie	2003	First	01.06.2003	10.06.2003	0	0	0	0		MK	<a href="#">Report2003 site-map 08</a>	Report2003

Datensatz: 1 von 91 (Gefiltert)

First, Second or other count

FLTR





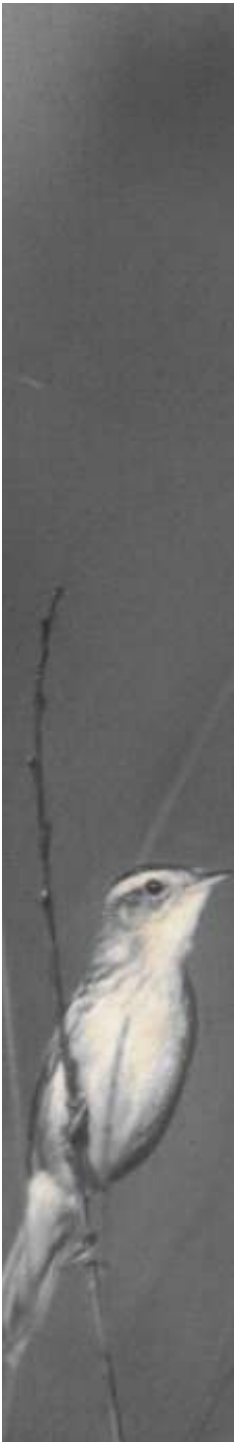
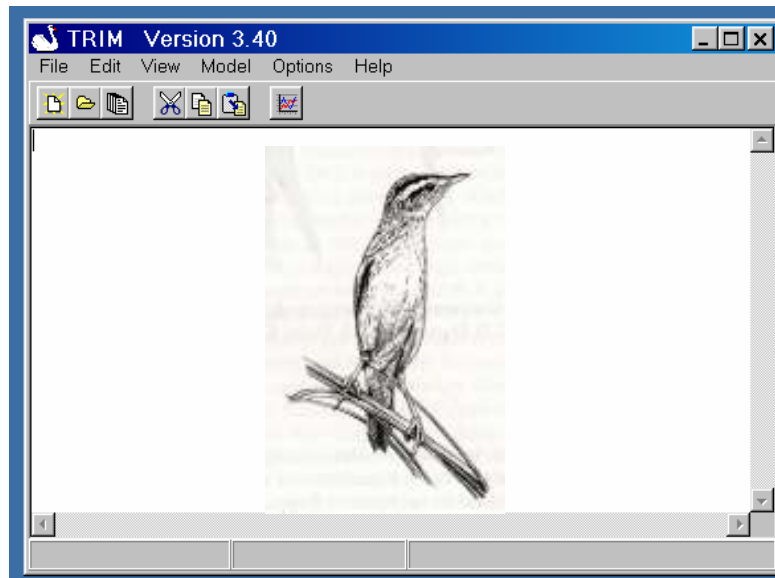
# What to do?

Problem 2: gaps

→ search for lacking information

**has been started by OTOP and will be continued over winter – please help!**

→ model population trend with TRIM

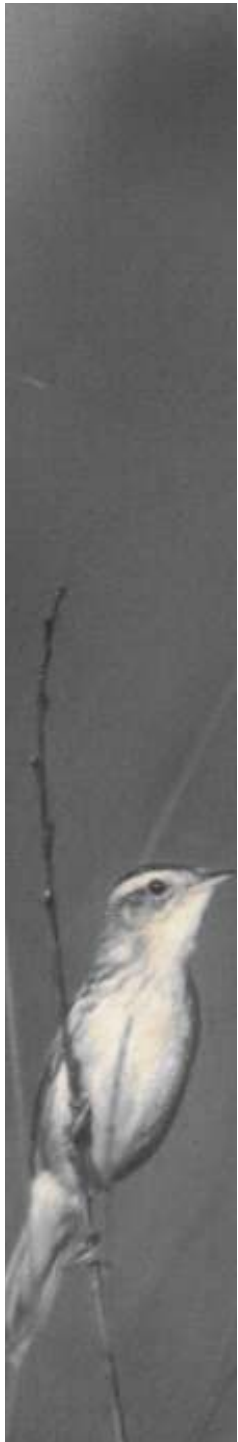


# What to do?

Problem 3: population estimates based on non-synchronous counts

→ agree and use (carefully) better population estimates

	First count	First count	Second count	Second count	Life Application	Comments
Year	Minimum	Maximum	Minimum	Maximum		
1993	237	237	no data	no data		only one count between 05.06. and 02.07.
1997	272	279	185	187	247-254	first 28.5.-27.6.; second 23.6.-6.7.
2003	86	88	75	77	70-79	
2004	52	52	76	76	about 80	
2005	48	51	64	67		no data PNUW and WPN first count
2006	37	39	78	80		bad counting conditions Rozwarowo first count
2007	54	56	76	78		no data PNUW and Stara Rudnica first count



## AW numbers Pomerania 2007

Site	Year	Date	Type of visit	Minimum	Maximum
<i>Karsiborska Kepa</i>	2007		<i>First</i>	15	15
<i>Zajecze Legi</i>	2007		<i>First</i>	0	0
<i>Rozwarowo</i>	2007		<i>First</i>	19	21
<i>WPN</i>	2007		<i>First</i>	8	8
<i>Krajnik</i>	2007		<i>First</i>	2	2
<i>NPUO</i>	2007		<i>First</i>	10	10
<i>PNUW</i>	2007		<i>First</i>	<i>no data</i>	<i>no data</i>
<i>Stara Rudnica</i>	2007		<i>First</i>	<i>no data</i>	<i>no data</i>
<b>Total</b>				<b>54</b>	<b>56</b>
<i>Karsiborska Kepa</i>	2007		<i>Second</i>	11	11
<i>Zajecze Legi</i>	2007		<i>Second</i>	2	2
<i>Rozwarowo</i>	2007		<i>Second</i>	35	35
<i>WPN</i>	2007		<i>Second</i>	10	10
<i>Krajnik</i>	2007		<i>Second</i>	5	5
<i>NPUO</i>	2007		<i>Second</i>	4	4
<i>PNUW</i>	2007		<i>Second</i>	8	10
<i>Stara Rudnica</i>	2007		<i>Second</i>	1	1
<b>Total</b>				<b>76</b>	<b>78</b>

