

A landscape photograph of a green field with a rainbow in a cloudy sky. The rainbow is positioned on the left side of the frame, arching from the horizon towards the top. The sky is filled with grey, overcast clouds. The foreground is a lush green field of tall grasses. In the distance, there is a line of trees under a dark, stormy sky.

AW monitoring programme in Belarus 2006-2007

Designing the monitoring scheme and
estimating national AW population

Viktar Fenchuk, APB-BirdLife Belarus

AW in Belarus

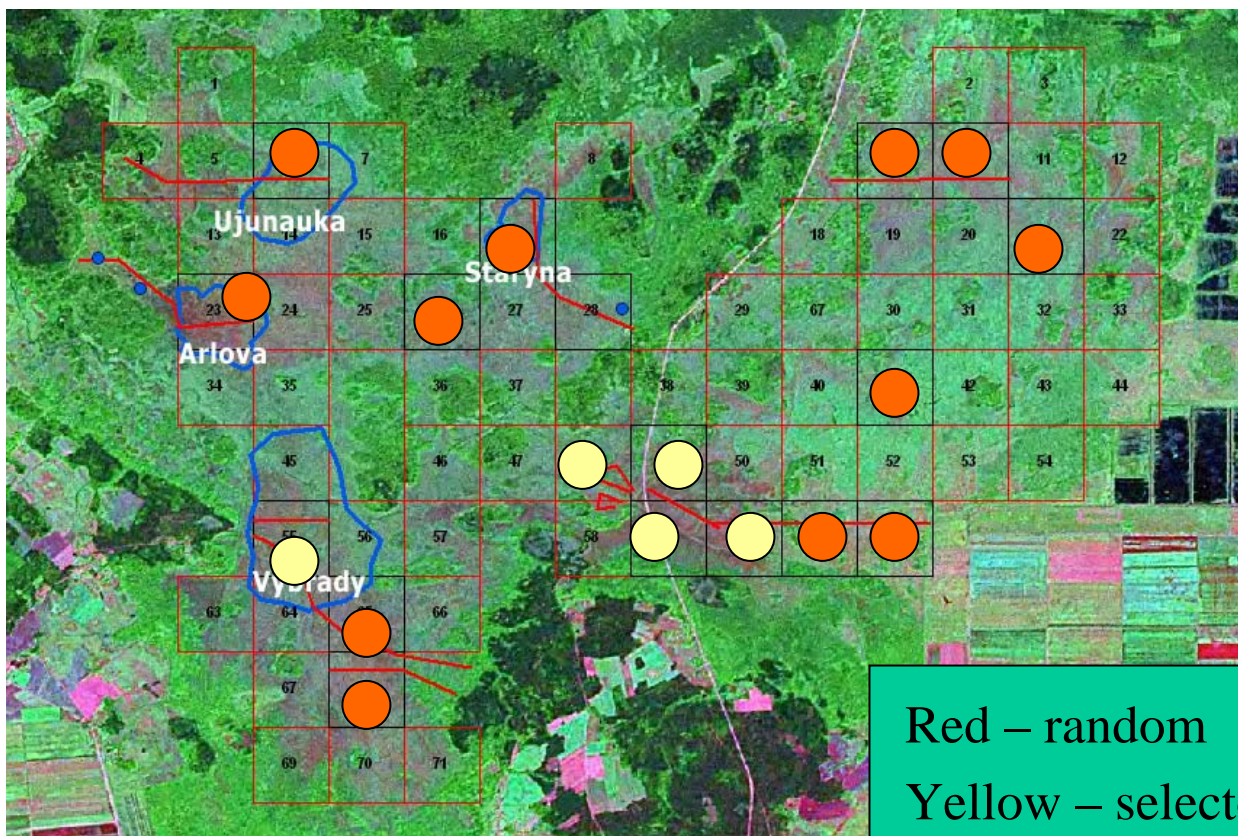


National count 2006-2007 in Belarus

Problems:

- exact distribution of AW within the sites was not known

Dzikaje mire - 2006

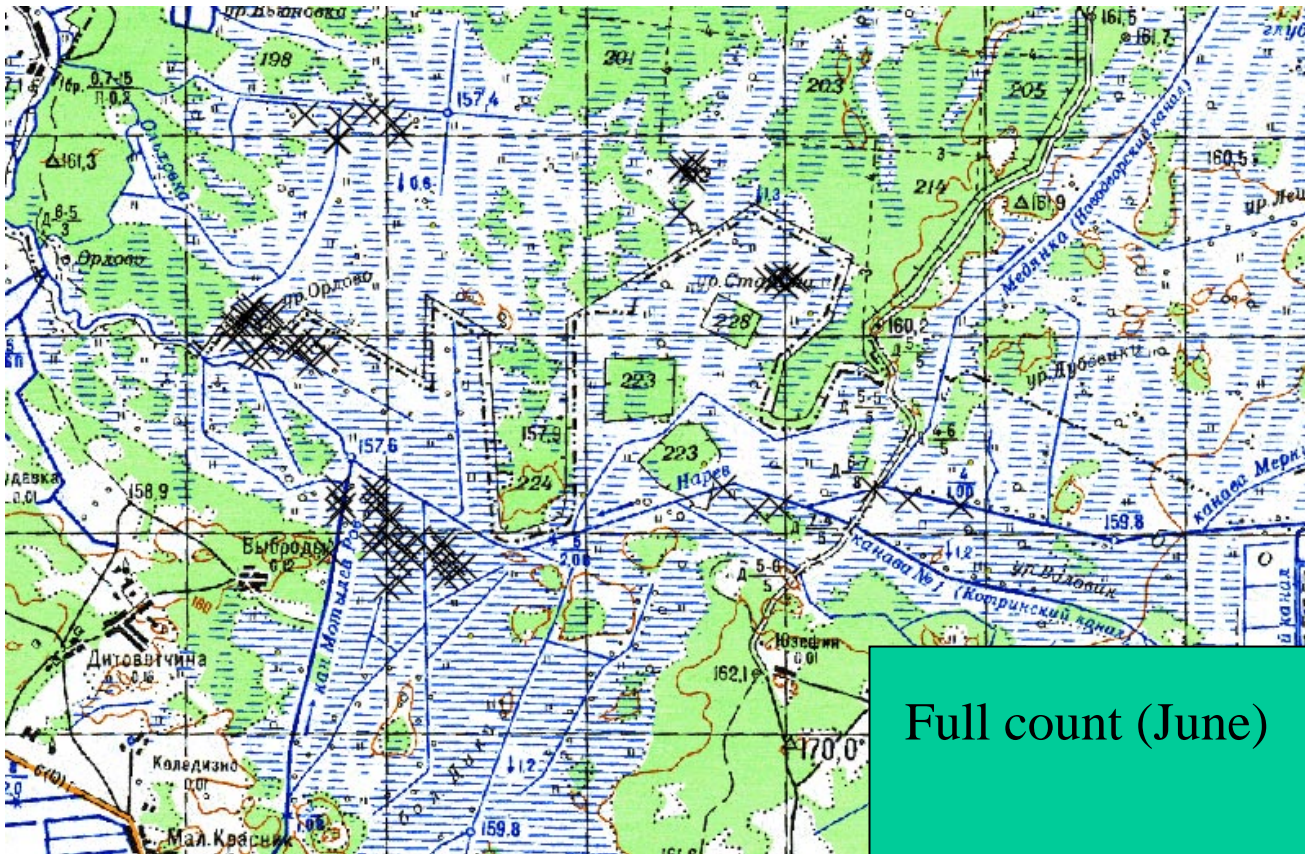


Red – random

Yellow – selected

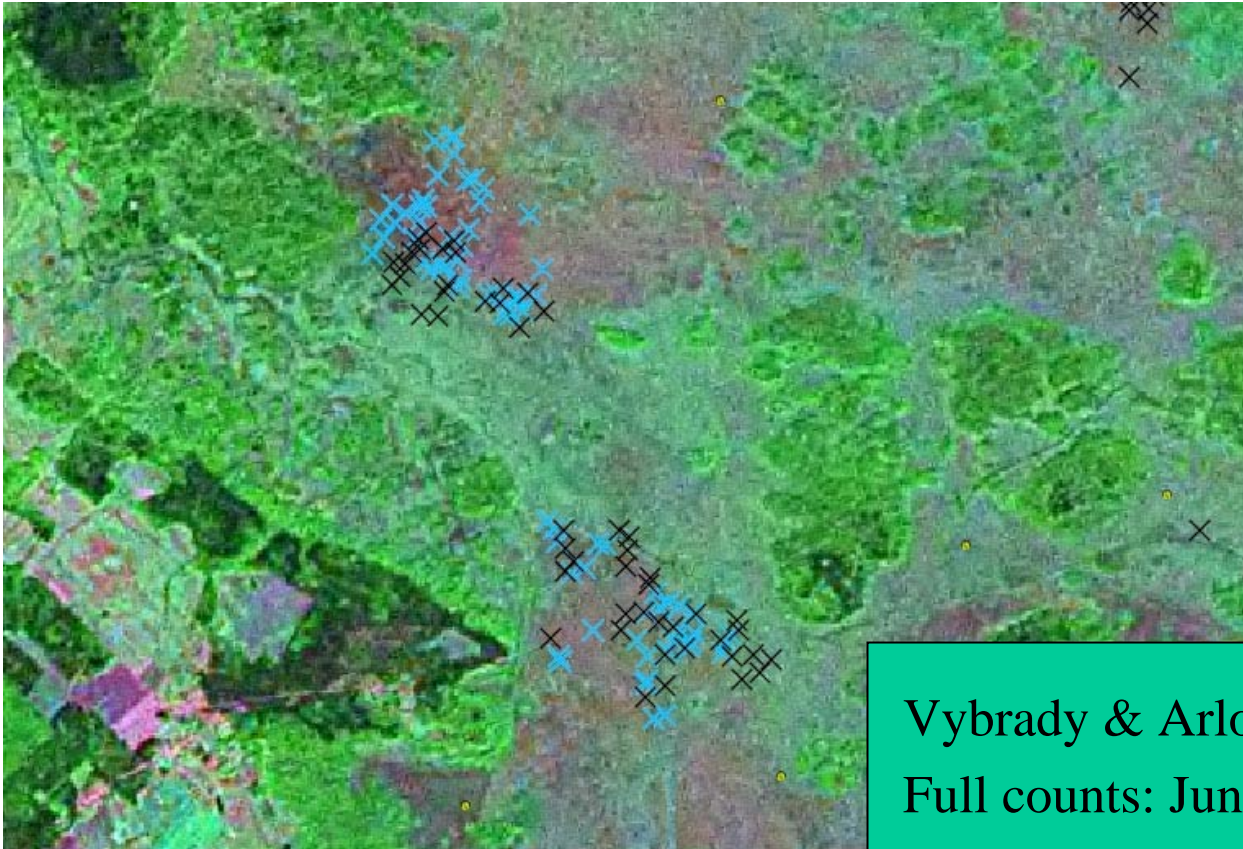
Blue – estimated AW range

Dzikaje mire - 2007



Full count (June)

Dzikaje mire - 2007



Vybrady & Arlova (Narev)

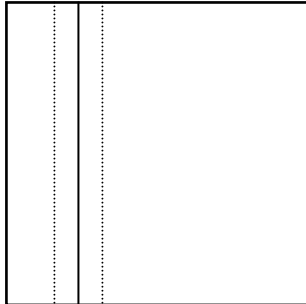
Full counts: June (black)

July (blue)

Dzikaje mire – population estimates

	Locality	Dikaje 2006 – random squares	Dzikaje 2006		Dzikaje 2007 – full counts
			Area	AW estimate	
	Vybrady		3	150	30
	Arlova		1	30	42
	Ujunauka		1	40?	6
	Staryna		<1	45	8
	Single vocalizing males				
	Narau			4	6
	Staryna			1	6
	Alhouka			4-5	
	Potentially unknown sites			50-100	50
	Total	710		325-375	98-148

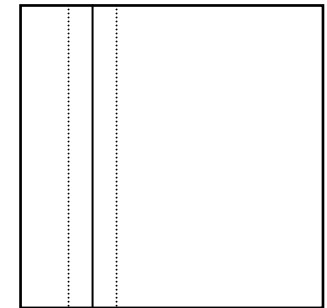
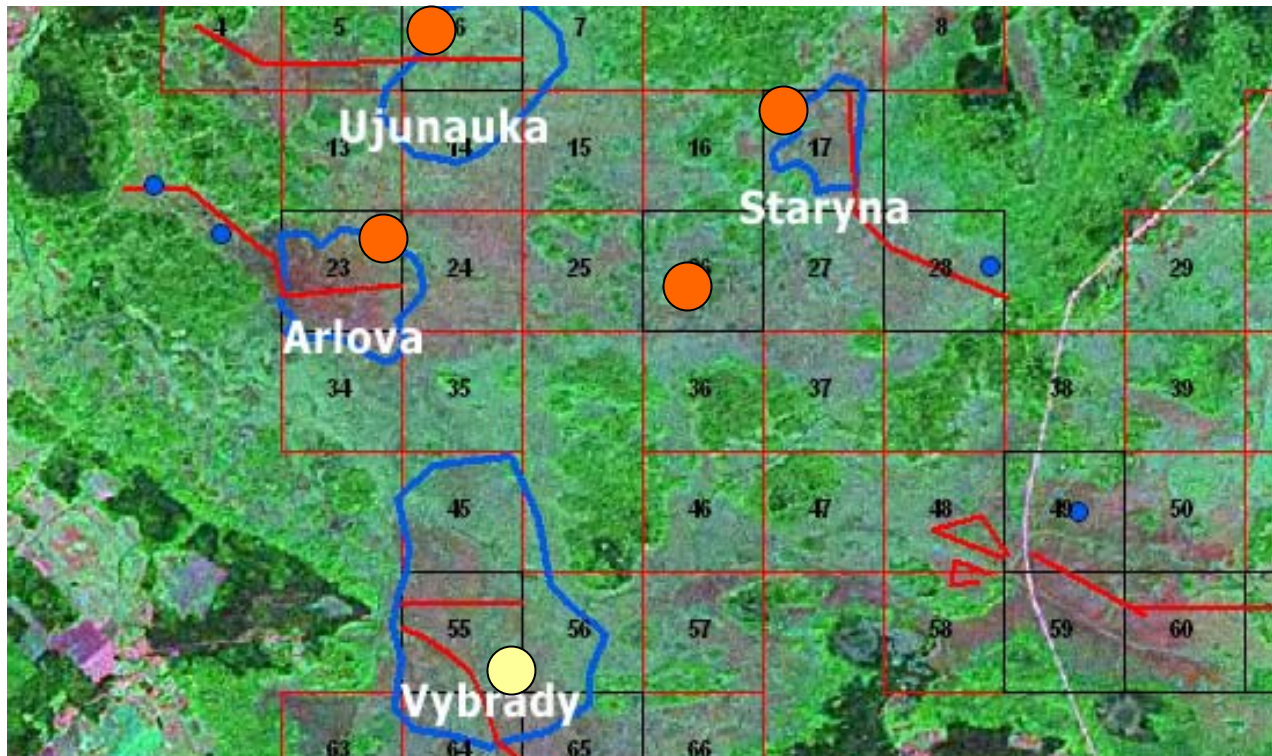
Dzikaje mire – random squares



The bias was introduced by the possibility of free choice of the monitoring plot in monitoring square.

In most cases it was chosen with account of best access – which means more open mire and hence better AW habitats

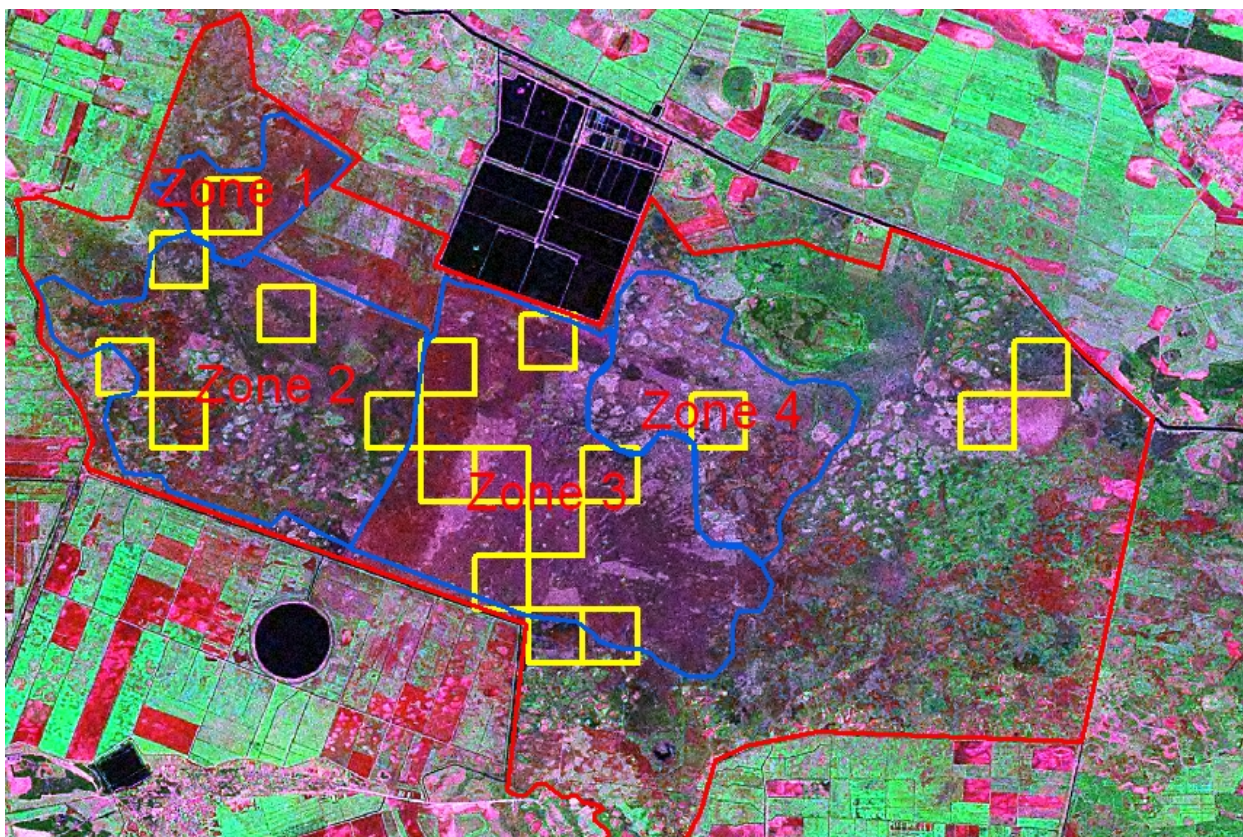
Dzikaje mire – random squares



The bias was introduced by the possibility of free choice of the monitoring plot in monitoring square. In most cases it was chosen with account of best access – which means more open mire and hence better AW habitats

AW monitoring – other sites

Zvanets:



AW estimate (1998-2005):

3000-8000 males

AW monitoring 2006
(permanent plots):
“standard” density

AW estimate 2006
random squares:
4841-5056 males

AW estimate 2006
(density/area):
4223-5159 males

Monitoring plots (routes) in monitoring squares were chosen depending on best access, too.

Dzikaje:

AW estimate (1998-2005):
1200-1600 males

AW monitoring 2006
(permanent plots):
“standard” density

AW estimate 2006
random squares:
720 males

AW estimate 2006
(density/area):
325-375 males

Zvanets:

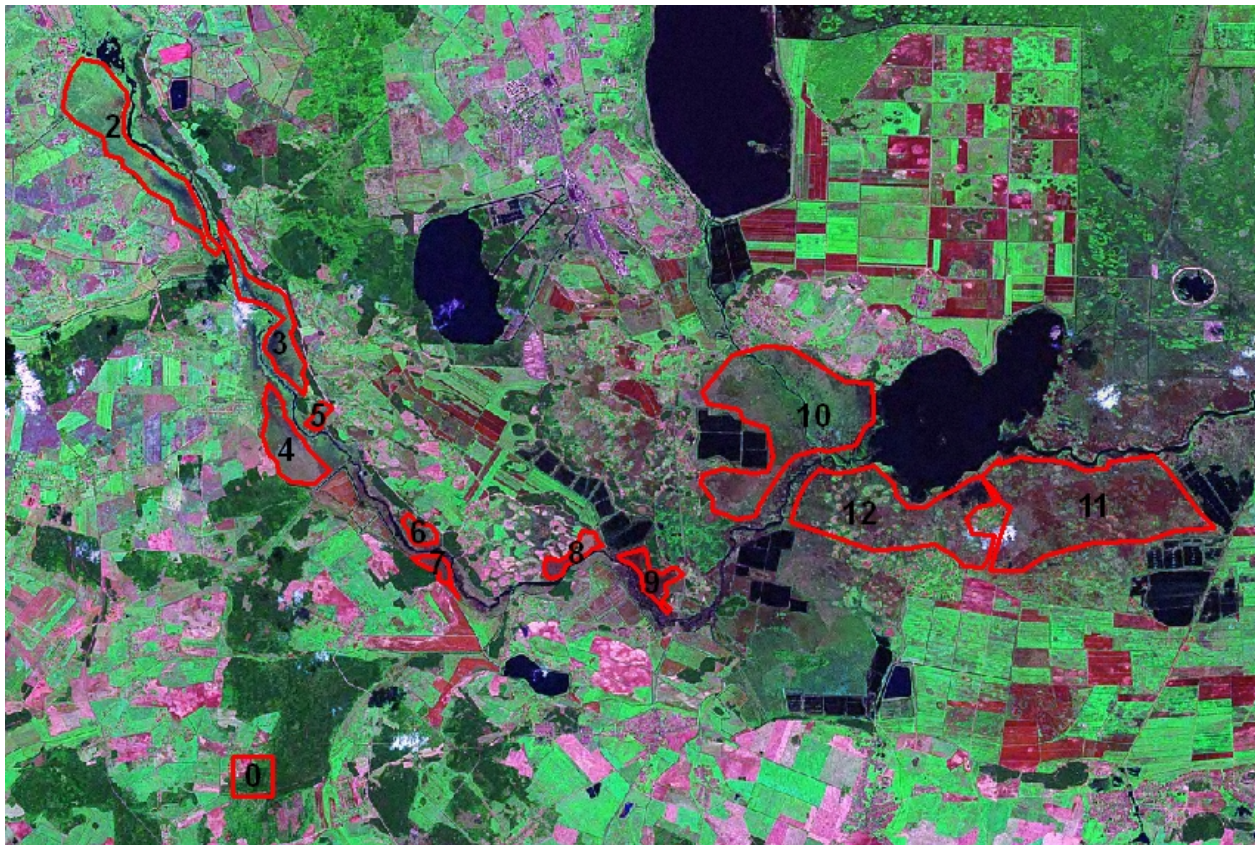
AW estimate (1998-2005):
3000-8000 males

AW monitoring 2006
(permanent plots):
“standard” density

AW estimate 2006
random squares:
4841-5056 males

AW estimate 2006
(density/area):
4223-5159 males

AW monitoring – other sites



Sporava:

AW estimate (1998-2005):
690-2120 males

AW estimate 2007
monitoring plots:
optimal density

AW estimate 2007 full
counts:
617-1016 males

AW monitoring – total population estimate

			AW estimate 1996-2005		AW estimate 2006-2007	
					min	max
1.	Zvanets and vicinity		3000-8000		4230	5168
2.	Sporava mire		690-2120		617	1016
3.	Dzikaje and vicinity		1200-1600		100	153
4.	Servach		50-300		34	41
5.	Almany mires		150-200		150	200
6.						
7.	All other sites		<100		16	50
	Total estimate		7,009 – 11,354		5147	6628