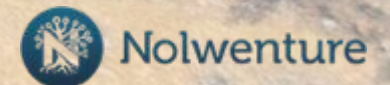


Peatland Restoration Web Atlas

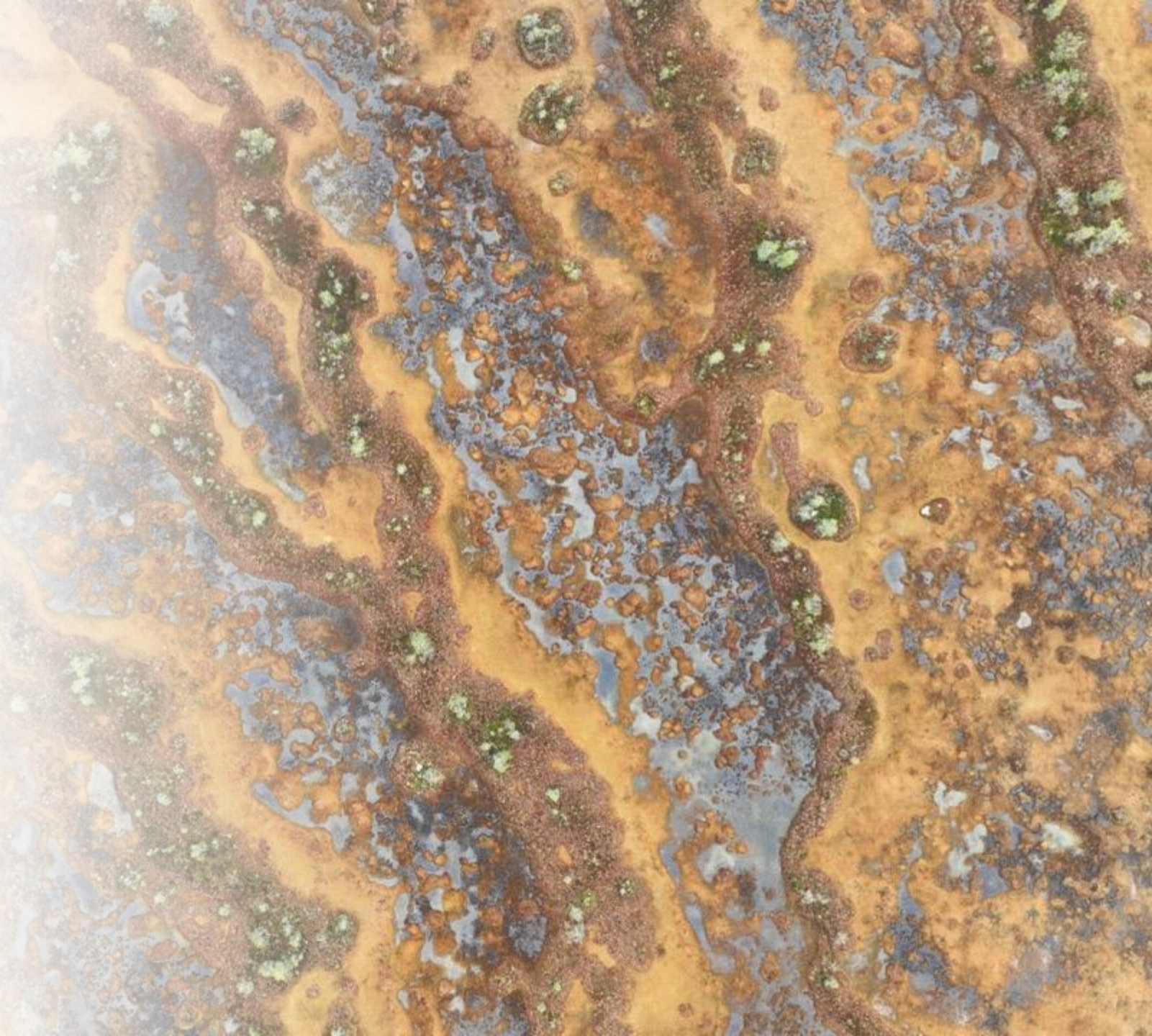
Tiina Oinonen Snowchange Cooperative

12.6.2025



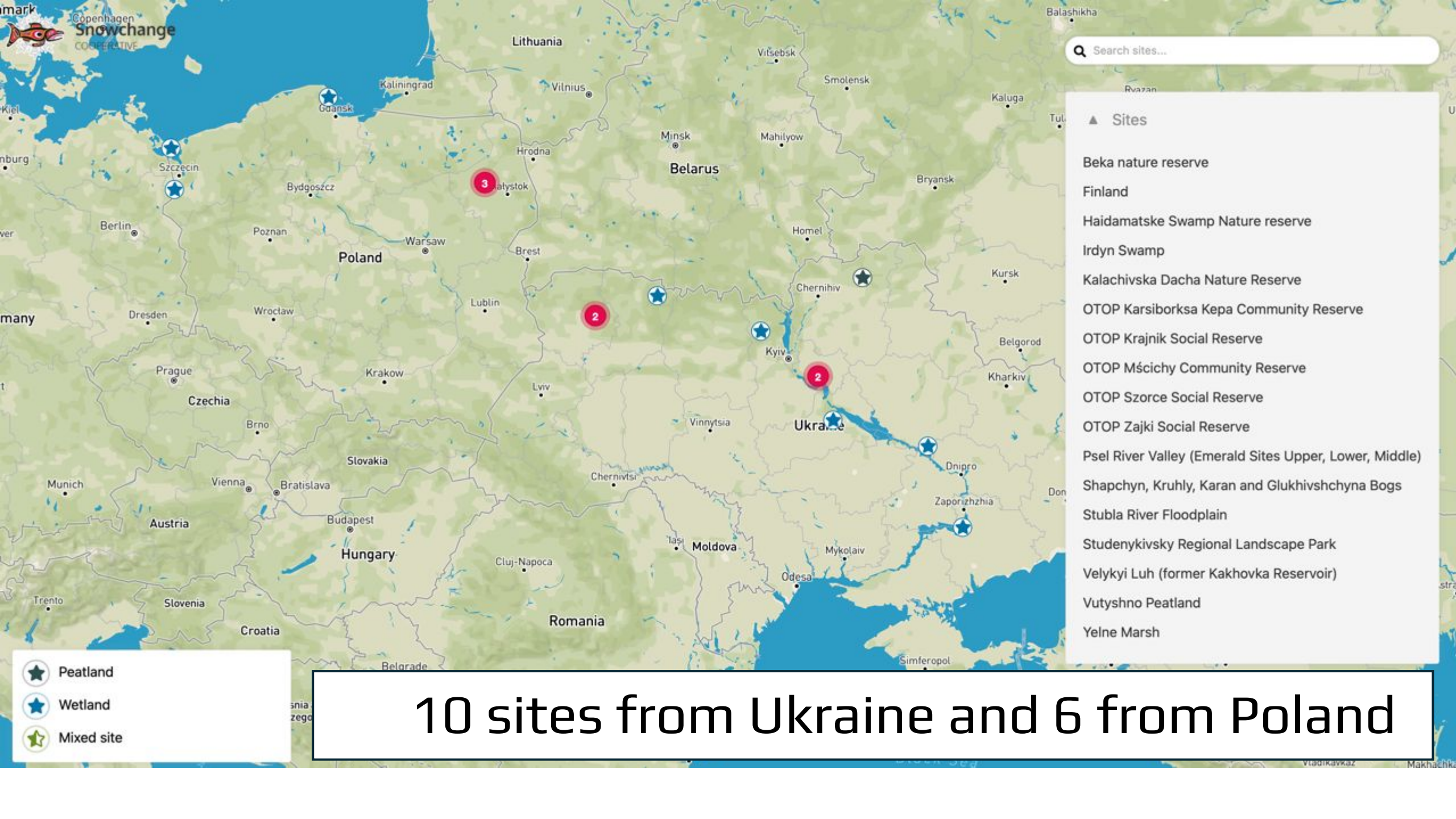
Objective

- To present the various peatland conservation and restoration actions
- To enable broader information exchange
- To bring public visibility to the partners' sites



- To increase understanding of the pressures on peatlands in different countries
- For presenting and communicating project results
- To promote best restoration practices
- To highlight biodiversity, climate, and water perspectives





158 sites in Finland

Search sites...

▲ Sites

Aittokorvenlampi

Altto-oja

Arola

Ellala

Haarasuo

Hanhiaapa

Haravasuo

Hautaneva

Heinäjänpää

Heposuo

Hietaranta

Hietaranta 2

Hirsijärvi

Horneankoski

Hämäläinen

Ilvesmaa

Jaakonvaara

Jokela

Jokiranta

Jokoshaara

► Jukajoki River and its Watershed

Juurikkaneva

Owned by Snowchange

Concession



Snowchange
COOPERATIVE

History

Irdyn Swamp was once the site of extensive peat extraction activities. The first attempts to develop the peat resources began in 1856, followed by intensified operations in 1915 and 1921. Drainage and extraction works continued until 1963, including the construction of a narrow-gauge railway and the use of mechanization. However, over time, these activities ceased, and the swamp now holds potential to become a national park. Today, the area is actively used for water-based tourism, attracting enthusiasts of outdoor activities, particularly those enjoying kayaking and canoeing.



photo by Andriy Chuyashenko

Summary

- The Web Atlas strengthens collaboration on peatland protection and restoration across Europe
- It promotes knowledge exchange, highlights best practices, and increases visibility of restoration sites
- The Web Atlas will be useful for presenting projects information and helping to foster landowners engagement and commitment to future projects

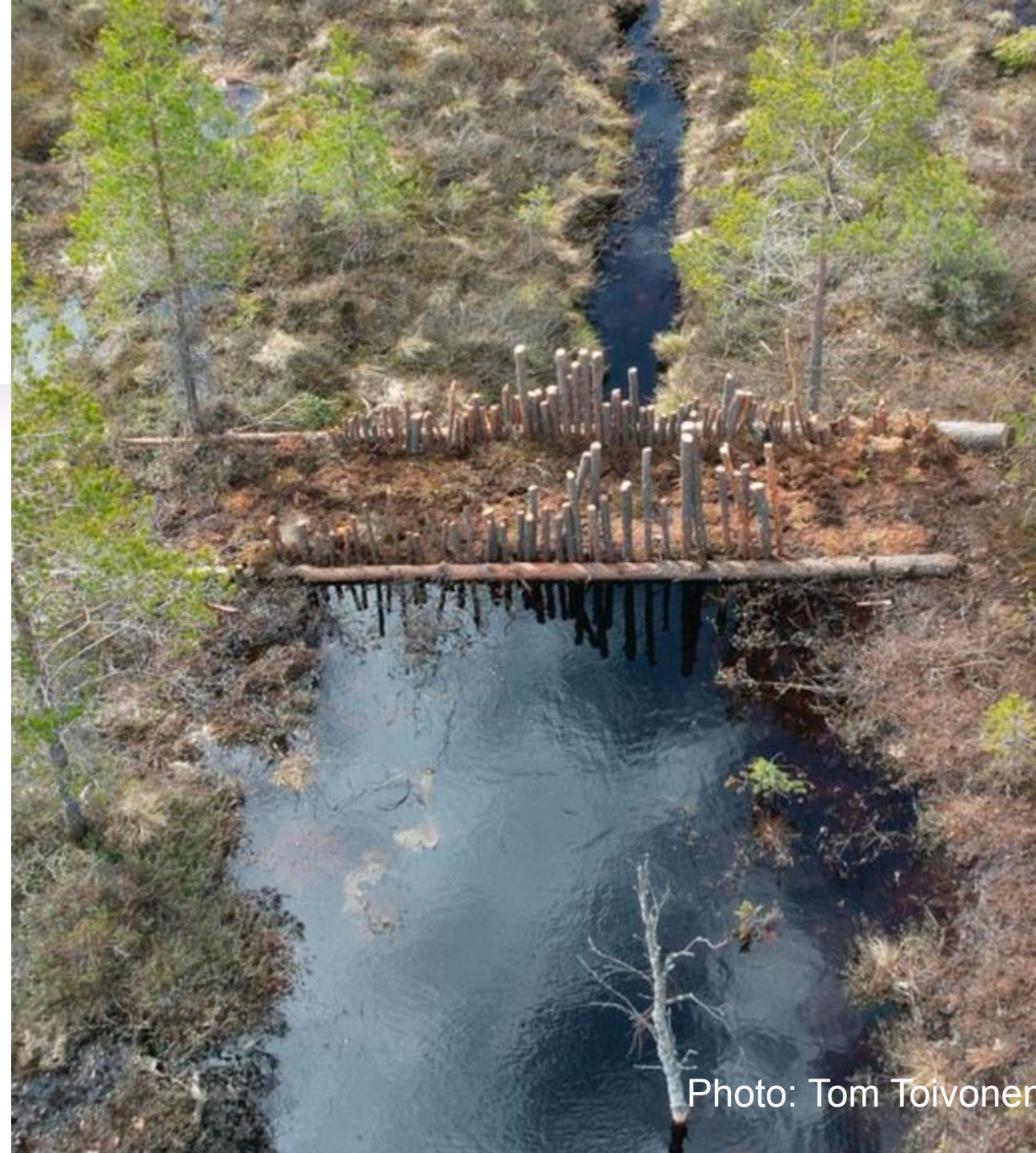


Photo: Tom Toivonen



Thank you!

www.peatlandrestorationatlas.org